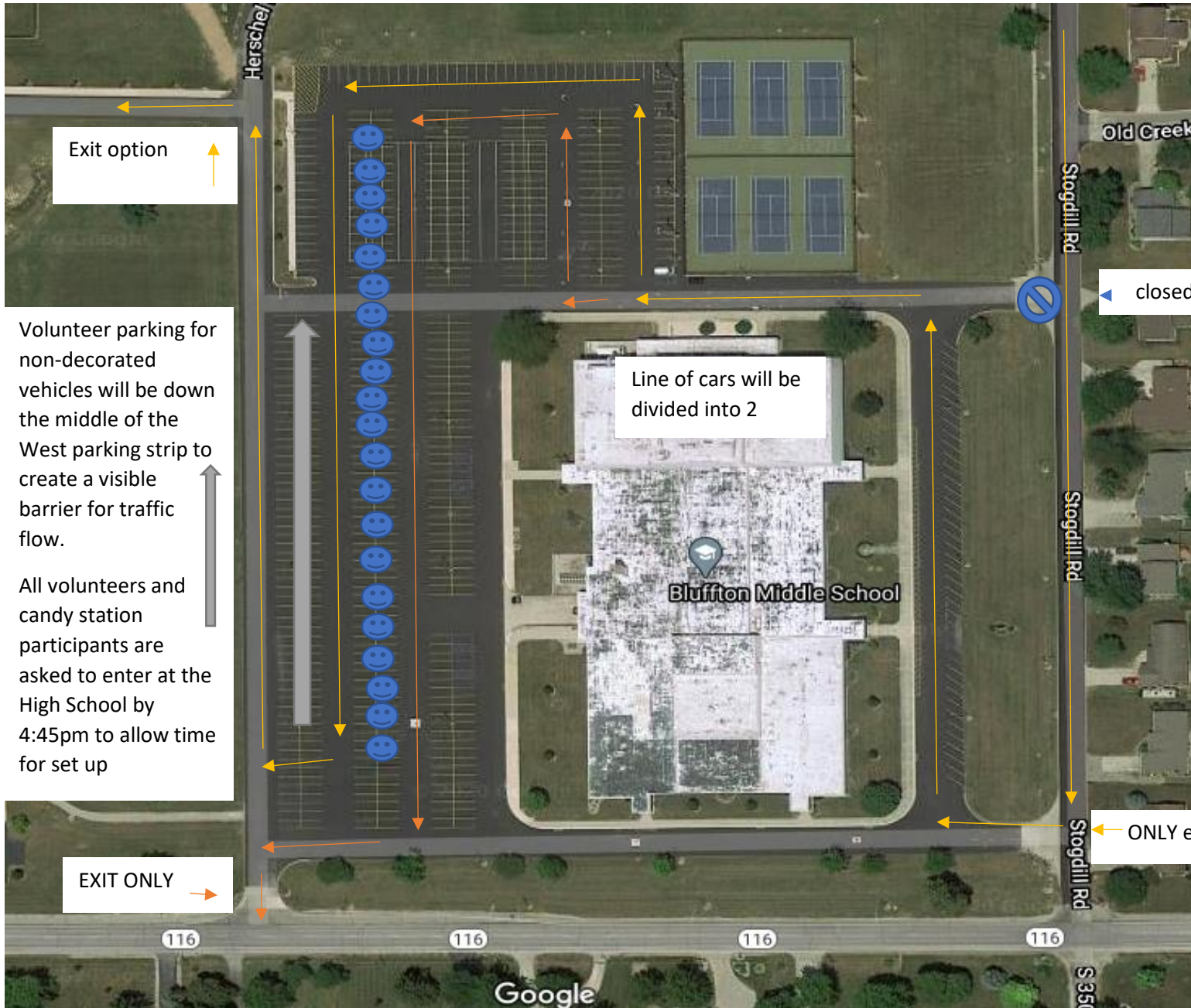


Drive-Thru Boo!

Oct 31st

5:30-7:30pm



There will be no early entrance and cars will not be permitted to hold up traffic on Stogdill before 5:30pm. Enjoy door to door trick or treating that starts at 5pm. Entrance is right turn only, no cross traffic coming off of 116.

Please place a paper with number of children in the vehicle in your dash and roll down your windows as you approach the candy stations.

MAINTAIN SLOW ROLL as candy is gently tossed inside. Everyone needs to remain buckled up and arms inside of vehicle.

Follow volunteer directions and have a fun night!!

ONLY entrance must turn right from Stogdill

☺ = candy stations. Park cars on center line facing South, so that those who decorated for trunk or treat will be facing traffic flow. Each candy station will need at least one person for the East line of cars and the West line of cars. Tables, banners, shirts of your business are all welcome, as are Halloween costumes