

CITY OF BLUFFTON

ADA

Transition Plan

April 18, 2023

Table of Contents

<u>Statement/Mission</u>	<u>1</u>
<u>Non-Discrimination Notice</u>	<u>1</u>
<u>Designation of an ADA Coordinator</u>	<u>2</u>
<u>Grievance Procedure</u>	<u>3</u>
<u>Design Standards for Sidewalks</u>	<u>4</u>
<u>Public Involvement Opportunities</u>	<u>4</u>
<u>Assessment Procedures</u>	<u>10</u>
<u>Inventory</u>	<u>12</u>
<u>Funding & Schedule</u>	<u>12</u>
<u>Review & Evaluation</u>	<u>12</u>
Appendix A – Grievance Form	
Appendix B – Building Inventory	
Appendix C – Complaint Log	
Appendix D – Ramp Inventory/Assessment	
Appendix E – Sidewalk Inventory/Assessment	

Statement/Mission

In 1990, the Federal Government enacted the Americans with Disabilities Act ("ADA"). The City of Bluffton, Indiana recognizes its legal obligation to comply with Title II of the ADA and hereby establishes a transition plan to ensure compliance of this federal law, rules and regulations. Therefore the City of Bluffton will identify barriers that exist and state how and when the barriers are to be removed by providing a means to address complaints of discrimination, by encouraging public input to assess, address and meet access needs, and by establishing periodic reviews of the plan to monitor progress and compliance. The purpose of the Plan is to ensure that the citizens of Bluffton are provided full access to the City of Bluffton programs, services and activities in a timely manner. The Bluffton elected officials and staff believe the ability to accommodate disabled persons is essential to good customer service, the quality of life Bluffton residents seek to enjoy and to effective governance. Title II of the ADA requires that each of the City of Bluffton services, programs and activities, when viewed in their entirety, be readily accessible and usable by individuals with disabilities.

Non-Discrimination Notice

In accordance with the requirements of Title II of the Americans with Disabilities Act of 1990 ("ADA"), the City of Bluffton will not discriminate against qualified individuals with disabilities on the basis of disability in its services, programs, or activities.

Employment: the City of Bluffton does not discriminate on the basis of disability in its hiring or employment practices and complies with all regulations promulgated by the U.S. Equal Employment Opportunity Commission under Title I of the ADA.

Effective Communication: the City of Bluffton will generally, upon request, provide appropriate aids and services leading to effective communication for qualified persons with disabilities so they can participate equally in the City of Bluffton programs, services, and activities, including qualified sign language interpreters, documents in Braille, and other ways of making information and communications accessible to people who have speech, hearing, or vision impairments.

Modifications to Policies and Procedures: the City of Bluffton will make all reasonable modifications to policies and programs to ensure that people with disabilities have an

equal opportunity to enjoy all of its programs, services and activities. For example, individuals with service animals are welcome in Bluffton City offices, even where pets are generally prohibited.

Anyone who requires an auxiliary aid or service for effective communication, or a modification of policies or procedures to participate in a program, service, or activity of the City of Bluffton, should contact the Office of the Clerk Treasurer at 260-824-0612, as soon as possible but no later than 48 hours before the scheduled event.

The ADA does not require the City of Bluffton to take any action that would fundamentally alter the nature of its programs or services, or impose an undue financial or administrative burden.

Complaints that a program, service, or activity of the City of Bluffton is not accessible to persons with disabilities should be directed to Briana Lautzenheiser, ADA Coordinator & Deputy Clerk Treasurer/HR, 260-824-0612 or bri@blufftonindiana.gov.

The City of Bluffton will not place a surcharge on a particular individual with a disability or any group of individuals with disabilities to cover the cost of providing auxiliary aids/services or reasonable modifications of policy, such as retrieving items from locations that are open to the public but are not accessible to persons who use wheelchairs.

Designation of an ADA Coordinator

Pursuant to Resolution 2018-4 adopted on the 27th day of February, 2018, by the Board of Public Works and Safety of the City of Bluffton the position of ADA Coordinator for the City of Bluffton was modified. The following individuals were appointed to serve in such capacity:

Briana Lautzenheiser
128 E. Market - Bluffton, IN 46714
260-824-0612
bri@blufftonindiana.gov

Tim Simpson
1205 S. Wayne - Bluffton, IN 46714
260-824-0714
Tim.simpson@blufftonindiana.gov

Briana Lautzenheiser holds such position concurrently with her appointment as the Deputy Clerk Treasurer/HR of Bluffton and is responsible for overseeing compliance with the ADA and Tim Simpson holds such position concurrently with his appointment as Street Commissioner and is also responsible for overseeing compliance with the ADA .

**The City of Bluffton, Indiana Grievance
Procedure under
The Americans with Disabilities Act**

This Grievance Procedure is established to meet the requirements of the Americans with Disabilities Act of 1990 ("ADA"). It may be used by anyone who wishes to file a complaint alleging discrimination on the basis of disability in the provision of services, activities, programs, or benefits by the City of Bluffton. The City of Bluffton Personnel Policy governs employment-related complaints of disability discrimination.

The complaint should be in writing and contain information about the alleged discrimination such as name, address, phone number of complainant and location, date, and description of the problem. Alternative means of filing complaints, such as personal interviews or a tape recording of the complaint will be made available for persons with disabilities upon request.

The complaint should be submitted by the grievant and/or his/her designee as soon as possible but no later than 60 calendar days after the alleged violation to:

Briana Lautzenheiser
Deputy Clerk & ADA Coordinator
128 E. Market St.
Bluffton, IN 46714
260-824-0612
bri@blufftonindiana.gov

Within 15 calendar days after receipt of the complaint, a City representative will meet with the complainant to discuss the complaint and the possible resolutions. Within 15 calendar days of the meeting, The City of Bluffton will respond in writing, and where appropriate, in a format accessible to the complainant, such as large print, Braille, or audio tape. The response will explain the position of the City of Bluffton and offer options for substantive resolution of the complaint.

If the response by The City of Bluffton does not satisfactorily resolve the issue, the complainant and/or his/her designee may appeal the decision within 15 calendar days after receipt of the response to the Board of Public Works or its designee.

Within 30 calendar days after receipt of the appeal, the Board of Public Works or its designee will meet with the complainant to discuss the complaint and possible resolutions.

Within 30 calendar days after the meeting, the Board of Public Works or its designee will respond in writing, and, where appropriate, in a format accessible to the complainant, with a final resolution of the complaint.

All written complaints received by the City of Bluffton, appeals to the Board of Public Works or its designee, and responses from these two offices will be retained by the City of Bluffton for at least three years.

Appendix A contains the Grievance Form

Design Standards-Sidewalks

Sidewalks: Sidewalk curbs constructed as part of planned development, sidewalk curbs replaced by or for the City of Bluffton, or sidewalk curbs replaced by or for a property owner through a City of Bluffton match funding program shall be constructed in accordance with the PROWAG (Proposed Accessibility Guidelines for Pedestrian Facilities in the Public Right-of-Way) regulations and standards.

Buildings: Any City of Bluffton owned buildings that are constructed, remodeled or updated shall be constructed in accordance with the most current ADAAG (Accessibility Guidelines for Buildings and Facilities) regulations and standards.

Public Involvement Opportunities

The general public is encouraged to participate in identifying needs or barriers to accessibility. This may be done by contacting the ADA Coordinator.

Briana Lautzenheiser
Deputy Clerk Treasurer/HR & ADA Coordinator
128 E. Market St.
Bluffton, IN 46714
260-824-0612
bri@blufftonindiana.gov

Inventory

In an effort to remove barriers to streets and sidewalks, the City of Bluffton has inventoried all curbs and sidewalks within City of Bluffton's jurisdiction. The inventory procedure is intended to identify a comprehensive list or inventory of all curbs and sidewalks in the City of Bluffton jurisdiction that are not ADA compliant. This is composed of an effort to both fully inventory all infrastructure that is present and then to identify those items in the system which are not compliant with ADA requirements.

The following attributes were collected for sidewalks and ramps.

- Measured width
- Cross slope observation (2% maximum)
- Heaving
- Continuity
- Joint condition
- Ramp width
- Ramp slope
- Ramp turning space
- Ramp clear space
- Detectable warnings

The above items were considered and a summary "Condition Rating" was given as follows:

- A ADA Compliant, no concerns (green)
- B Minor problem noted, but no immediate needs (orange)
- C One major problem or multiple minor problems, needs some attention (yellow)
- D Multiple major problems, possibly impassible for wheelchairs (pink)
- F Broken, impassable by wheelchairs, difficult for pedestrians (red)

Examples of sidewalk and ramp ratings are provided on the following pages.

Examples of Curb Ramp Grade Ratings

Grade A – Complies with all standards.



Grade B – Minor Deficiency: The ramp shown has no detectable warning.



Grade C – Major Deficiency: The ramp shown here is too narrow, doesn't have a detectable warning, and has a joint displacement.



Grade D – Multiple Major Deficiencies: The ramp shown here is too narrow, it is too steep, has a bad cross slope, and no detectable warning.



Grade F – Not present, broken, and/or impassable.



Examples of Sidewalk Grade Ratings

Grade A – Complies with all standards.



Grade B – Minor Deficiency:
For instance, the sidewalk shown here has a cross slope greater than 2%.



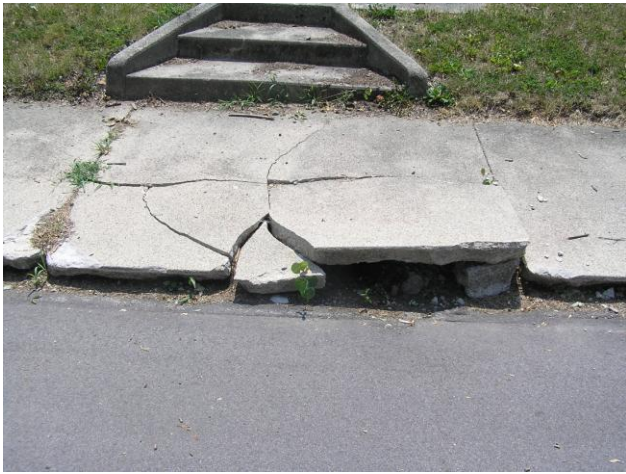
Grade C – Major Deficiency: For instance, the sidewalk shown here is too narrow and has joint displacements making it complicated to navigate by wheelchair, though still passable for someone walking.



Grade D – Multiple Major Deficiencies: For instance, the sidewalks shown here are too narrow, they have joint displacements, rough/cracked surfaces, and gaps making it likely impassable by wheelchair, though a fit walker could still navigate the sidewalk.



Grade F – Not present, broken, and/or impassable.



Currently there are 1431 ramps in Bluffton. The number of non-compliant ramps is 1097. Of the 1097 non-compliant ramps, 64 are rated a B, 170 are rated a C, 238 are rated a D, and 625 are rated a F.

Currently there are 751 sidewalks in Bluffton. The number of non-compliant sidewalks is 721. Of the 721 non-compliant sidewalks, 251 are rated a B, 256 are rated a C, 138 are rated a D, and 76 are rated a F.

Assessment Procedures

The assessment procedure is intended to establish the relative importance or priority of the various obstacles that are identified in the Inventory Phase.

This procedure will use four different evaluation factors. Each factor will have a score, with higher values indicating greater importance. Scores are then to be totaled to assist in the identification of which facilities are highest in priority.

Condition of Sidewalk or Ramp

- 1 point = Rating of B
- 2 points = Rating of C
- 3 points = Rating of D or F

Vicinity of Pedestrian Destinations

Pedestrian Destination includes commercial businesses, schools, parks, government buildings/offices, libraries, churches

0 point = nothing nearby

1 point = within 1 block of pedestrian destination

2 points = within 1 block of multiple pedestrian destination

3 points = adjacent to a park, school, government building or library

Public Interest

0 point = no comments

1 point = multiple public comments received

2 points = subject of a formal ADA grievance filing

Local Priority

This is intended to be a local decision-makers tool to provide emphasis to a specific need based on a special concern, especially one of public safety, anticipated heavy pedestrian traffic, or special site condition.

0 point = no special concerns noted at or near location

1 point = some special concern exists at or near location

2 points = special local emphasis exists at or near location

By totaling these factors, the highest score achievable would be 10, with the lowest being at least a 1. Each obstacle identified in the Inventory phase will be evaluated under this procedure. A total score for each need can thus be provided, with higher scores revealing higher priority repairs and improvements.

Inventory

Buildings: The City of Bluffton owns a limited number of properties. These facilities are as follows:

- 1) **City Hall**, 128 E Market Street, Bluffton, IN 46714
- 2) **City of Bluffton Police & Fire**, 204 E Market Street, Bluffton, IN 46714

A self-evaluation/assessment of each of the City of Bluffton's facilities has been conducted. The current ADAAG and PROWAG standards have been used to evaluate and collect the data on the buildings.

Funding & Scheduling

The City of Bluffton will use the following funding sources the Sidewalk Fund and Community Crossings Grant Fund to repair, modify or reconstruct sidewalks and ramps. The City of Bluffton intends to spend \$50,000 annually to repair, modify or reconstruct sidewalk and ramps to meet current ADA standards.

Review & Evaluation

Each year the Mayor will meet with the ADA Coordinator to review the City of Bluffton's efforts put forth the previous year to comply with the ADA and the implementation of the Transition Plan. At this time an update to the Transition Plan will be done. This shall include any adjustment to the number of sidewalks and ramps that are non-compliant, any changes to funding sources and changes to the schedule, if needed. The Mayor and ADA Coordinator shall review the prioritization of repairs, modifications or replacement of sidewalks and curbs for the upcoming year. At this time they will also determine the number of sidewalks and curbs that can be brought into compliance with ADA standards (if different than previously stated in Transition Plan).

The review and evaluation will continue each January until all sidewalks and ramps are ADA compliant and the Transition Plan is completed.

Appendix A

GRIEVANCE FORM

COMPLAINANT INFORMATION:	
Name:	
Address:	
Daytime Phone:	
Email:	
LOCATION INFORMATION	
Address (If Known):	
Location Description:	
NATURE OF GRIEVANCE	
Sidewalk, Ramp:	
Crosswalk, Pedestrian Signal:	
Building Access:	
Programming:	
Other:	
Describe the Grievance/Complaint/Problem:	
Date of Incident, If Applicable:	
FOR LOCAL/ADA COORDINATOR USE ONLY	
City Representative Preparing the Form if not by Complainant and Date Complaint Received:	
Date Received by Department Head, If Appl.:	
Date Received by ADA Coordinator:	
Date of Initial Contact:	
Date of Meeting or Site Visit:	
Date Assigned to Department Head/Who:	
Date Returned from Department:	
Date ADA Coordinator's Decision Mailed:	
Date Appeal Received by Council:	

Date First on City Council Agenda:	
Date City Council Decision:	
Date Council Decision Mailed:	

Appendix B

City Hall

Overall Rating: B+

Rating Comments

Accessible approach/Entrance

Route of Travel	B	Bike rack and bench on sidewalk (accessible pathway)
Ramps	n/a	
Parking and Drop-Off Areas	B	
Entrance	A	

Access to Goods and Services

Horizontal Circulation	B	Entire accessible pathway should be at least 36" wide
Doors	A	
Rooms and Spaces	A	
Emergency Egress	A	
Signage for Goods and Services	A	
Vertical Circulation	A	
Elevators	B	Elevators should have both visible and audible indicators

Usability of Rest Rooms

Getting to the Rest Rooms	A	
Doorways and Passages	A	
Stalls	B	Stall doors need to be operable with a closed fist
Lavatories	A	

Additional Access

Drinking Fountains	B	
--------------------	---	--

Police & Fire Building

Overall Rating: B+

Rating Comments

Accessible approach/Entrance

Route of Travel	A	
Ramps	B	
Parking and Drop-Off Areas	B	
Entrance	A	

Access to Goods and Services

Horizontal Circulation	A	
Doors	A	
Rooms and Spaces	A	
Emergency Egress	C	Emergency systems should have flashing lights and audible signals
Signage for Goods and Services	C	Does not meet requirements
Vertical Circulation	n/a	
Elevators	n/a	

Usability of Rest Rooms

Getting to the Rest Rooms	A	
Doorways and Passages	A	
Stalls	A	
Lavatories	A	

Additional Access

Drinking Fountains	B	
--------------------	---	--

Appendix C

CITY OF BLUFFTON INDIANA							
ADA COMPLAINT LOG							
Case No.	Investigator	Complainant	Sub-recipient	Protected Category	Date Filed	Date of Final Report	Disposition

Appendix D

See Separate Document

Appendix E

See Separate Document

Appendix D

Ramps			
Bluffton	Grade	Location	Description
1A	A	SR 1 & Water St	ADA Compliant
1H	A		ADA Compliant
2A	A	SR 1 & Wabash St	ADA Compliant
2B	A		ADA Compliant
2C	A		ADA Compliant
2D	A		ADA Compliant
2E	A		ADA Compliant
2F	A		ADA Compliant
2G	A		ADA Compliant
2H	A		ADA Compliant
3A	A	SR 1 & Perry St	ADA Compliant
3D	A		ADA Compliant
3E	A		ADA Compliant
3H	A		ADA Compliant
4A	A	SR 1 & Market St	ADA Compliant
4B	A		ADA Compliant
4C	A		ADA Compliant
4D	A		ADA Compliant
4E	A		ADA Compliant
4F	A		ADA Compliant
4G	A		ADA Compliant
4H	A		ADA Compliant
5A	A	SR 1 & Walnut St	ADA Compliant
5D	A		ADA Compliant
5E	A		ADA Compliant
5H	A		ADA Compliant
6A	A	SR 1 & Washington St	ADA Compliant
6B	A		ADA Compliant
6C	A		ADA Compliant
6D	A		ADA Compliant
6E	A		ADA Compliant
6F	A		ADA Compliant
6G	A		ADA Compliant
6H	A		ADA Compliant
7A	A	SR 1 & Cherry St	ADA Compliant
7D	A		ADA Compliant
7E	A		ADA Compliant
7H	A		ADA Compliant
8A	A	SR 1 & Poplar St	ADA Compliant
8D	A		ADA Compliant
8E	A		ADA Compliant
8H	A		ADA Compliant
9A	A	SR 1 & South St	ADA Compliant
9D	A		ADA Compliant
9E	A		ADA Compliant
9H	A		ADA Compliant

Shaded area indicates the ramp is within INDOT's right of way

Ramps			
Bluffton	Grade	Location	Description
10A	A	SR 1 & Riley St	ADA Compliant
10D	A		ADA Compliant
10E	A		ADA Compliant
10H	A		ADA Compliant
11A	A	SR 1 & Central Ave	ADA Compliant
11B	A		ADA Compliant
11D	A		ADA Compliant
11E	A		ADA Compliant
11F	A		ADA Compliant
11G	A		ADA Compliant
11H	A		ADA Compliant
12A	A	SR 1 & Wiley Ave	ADA Compliant
12B	A		ADA Compliant
12C	A		ADA Compliant
12D	A		ADA Compliant
12E	A		ADA Compliant
12F	A		ADA Compliant
12G	A		ADA Compliant
12H	A		ADA Compliant
13D	A	SR 1 & Ohio St	ADA Compliant
13E	A		ADA Compliant
14A	A	SR 1 & Arnold St	ADA Compliant
14C	A		ADA Compliant
14D	A		ADA Compliant
14E	A		ADA Compliant
14H	A		ADA Compliant
15A	A	SR 1 & Silver St	ADA Compliant
15B	A		ADA Compliant
15C	A		ADA Compliant
15D	A		ADA Compliant
15E	A		ADA Compliant
15F	A		ADA Compliant
15G	A		ADA Compliant
15H	A		ADA Compliant
16A	A	SR 1 & Townley St	ADA Compliant
16B	A		ADA Compliant
16C	A		ADA Compliant
16D	A		ADA Compliant
16E	A		ADA Compliant
16F	A		ADA Compliant
16G	A		ADA Compliant
16H	A		ADA Compliant
17A	A	SR 1 & Horton St	ADA Compliant
17B	A		ADA Compliant
17C	A		ADA Compliant
17D	A		ADA Compliant
17E	A		ADA Compliant

Ramps			
Bluffton	Grade	Location	Description
17F	A	SR 1 & Horton St	ADA Compliant
17G	A		ADA Compliant
17H	A		ADA Compliant
18B	A	SR 1 & Spring St	ADA Compliant
18C	A		ADA Compliant
18D	A		ADA Compliant
18E	A		ADA Compliant
19A	C	Johnson St & Water St	2 Deficiencies
19D	C		2 Deficiencies
19E	B		1 Deficiency
19F	B		1 Deficiency
19G	F		No Ramp
19H	F		No Ramp
20A	A	Johnson St & Wabash St	ADA Compliant
20B	A		ADA Compliant
20C	A		ADA Compliant
20D	A		ADA Compliant
20E	A		ADA Compliant
20F	A		ADA Compliant
20G	A		ADA Compliant
20H	A		ADA Compliant
21A	A	Johnson St & Perry St	ADA Compliant
21B	A		ADA Compliant
21C	A		ADA Compliant
21D	A		ADA Compliant
21E	A		ADA Compliant
21F	A		ADA Compliant
21G	A		ADA Compliant
21H	A		ADA Compliant
22A	B	Johnson St & Market St	1 Deficiency
22B	B		1 Deficiency
22C	B		1 Deficiency
22D	B		1 Deficiency
22E	B		1 Deficiency
22F	C		2 Deficiencies
22G	C		2 Deficiencies
22H	B		1 Deficiency
23A	B	Johnson St & Walnut St	1 Deficiency
23D	C		2 Deficiencies
23E	B		1 Deficiency
23H	B		1 Deficiency
24A	C	Johnson St & Washington St	2 Deficiencies
24B	B		1 Deficiency
24C	C		2 Deficiencies
24D	B		1 Deficiency
24E	C		2 Deficiencies
24F	C		2 Deficiencies

Ramps			
Bluffton	Grade	Location	Description
24G	C	Johnson St & Washington St	2 Deficiencies
24H	C		2 Deficiencies
25A	F	Johnson St & Cherry St	No Ramp
25B	F		No Ramp
25C	F		No Ramp
25D	D		3 or more Deficiencies
25E	F		No Ramp
25F	F		No Ramp
25G	A		ADA Compliant
25H	A		ADA Compliant
26A	A	Johnson St & Poplar St	ADA Compliant
26D	F		No Ramp
26E	F		No Ramp
26H	F		No Ramp
27A	F	Johnson St & South St	No Ramp
27B	F		No Ramp
27C	F		No Ramp
27D	F		No Ramp
27E	F		No Ramp
27F	F		No Ramp
27G	F		No Ramp
27H	F		No Ramp
28A	C	Johnson St & Riley St	2 Deficiencies
28D	F		No Ramp
28E	C		2 Deficiencies
28H	F		No Ramp
29A	F	Johnson St & Central Ave	No Ramp
29B	F		No Ramp
29C	F		No Ramp
29D	F		No Ramp
29E	B		1 Deficiency
29F	B		1 Deficiency
29G	F		No Ramp
29H	F		No Ramp
30A	F	Johnson St & Wiley Ave	No Ramp
30B	B		1 Deficiency
30C	F		No Ramp
30D	C		2 Deficiencies
30E	F		No Ramp
30F	F		No Ramp
30G	F		No Ramp
30H	C		2 Deficiencies
31A	F	Johnson St & Ohio St	No Ramp
31H	F		No Ramp
32D	F	Johnson St & Arnold St	No Ramp
32E	F		No Ramp

Ramps			
Bluffton	Grade	Location	Description
33A	F	Johnson St & Silver St	No Ramp
33B	F		No Ramp
33C	D		3 or more Deficiencies
33D	D		3 or more Deficiencies
33E	D		3 or more Deficiencies
33F	D		3 or more Deficiencies
33G	D		3 or more Deficiencies
33H	D		3 or more Deficiencies
34A	F	Johnson St & Townley St	No Ramp
34C	A		ADA Compliant
34D	A		ADA Compliant
34E	A		ADA Compliant
34F	F		No Ramp
34G	F		No Ramp
35	NONE	Johnson St & Horton St	N/A
36	NONE	Johnson St & Spring St	N/A
37A	F	Marion St & Lancaster St	No Ramp
37H	F		No Ramp
38A	D	Marion St & Drummond St	3 or more Deficiencies
38H	D		3 or more Deficiencies
39A	D	Marion St & Miller St	3 or more Deficiencies
39H	F		No Ramp
40E	C	Marion St & Water St	2 Deficiencies
40F	A		ADA Compliant
41A	B	Marion St & Wabash St	1 Deficiency
41B	B		1 Deficiency
41C	B		1 Deficiency
41D	B		1 Deficiency
41E	A		ADA Compliant
41F	A		ADA Compliant
41G	A		ADA Compliant
41H	B		1 Deficiency
42A	A	Marion St & Perry St	ADA Compliant
42D	C		2 Deficiencies
42E	C		2 Deficiencies
42H	A		ADA Compliant
43A	B	Marion St & Market St	1 Deficiency
43B	B		1 Deficiency
43C	B		1 Deficiency
43D	C		2 Deficiencies
43E	B		1 Deficiency
43F	D		3 or more Deficiencies
43G	C		2 Deficiencies
43H	B		1 Deficiency
44A	F	Marion St & Walnut St	No Ramp
44B	F		No Ramp
44C	F		No Ramp

Ramps			
Bluffton	Grade	Location	Description
44D	F	Marion St & Walnut St	No Ramp
44E	F		No Ramp
44H	F		No Ramp
45A	B	Marion St & Washington St	1 Deficiency
45B	B		1 Deficiency
45C	B		1 Deficiency
45D	B		1 Deficiency
45E	C		2 Deficiencies
45F	D		3 or more Deficiencies
45G	B		1 Deficiency
45H	B		1 Deficiency
46A	C	Marion St & Cherry St	2 Deficiencies
46B	C		2 Deficiencies
46C	C		2 Deficiencies
46D	C		2 Deficiencies
46E	C		2 Deficiencies
46F	C		2 Deficiencies
46G	D		3 or more Deficiencies
46H	C		2 Deficiencies
47A	D	Marion St & Poplar St	3 or more Deficiencies
47D	D		3 or more Deficiencies
47E	F		No Ramp
47H	F		No Ramp
48A	F	Marion St & South St	No Ramp
48B	F		No Ramp
48C	F		No Ramp
48D	F		No Ramp
48E	F		No Ramp
48F	F		No Ramp
48G	F		No Ramp
48H	F		No Ramp
49A	C	Marion St & Riley St	2 Deficiencies
49D	F		No Ramp
49E	C		2 Deficiencies
49H	F		No Ramp
50A	A	Marion St & Central Ave	ADA Compliant
50B	A		ADA Compliant
50C	F		No Ramp
50D	C		2 Deficiencies
50E	F		No Ramp
50F	F		No Ramp
50G	F		No Ramp
50H	F		No Ramp
51A	F	Marion St & Wiley Ave	No Ramp
51B	F		No Ramp
51C	F		No Ramp
51D	C		2 Deficiencies

Ramps			
Bluffton	Grade	Location	Description
51E	C	Marion St & Wiley Ave	2 Deficiencies
51F	F		No Ramp
51G	F		No Ramp
51H	F		No Ramp
52D	F	Marion St & Ohio St	No Ramp
52E	F		No Ramp
53A	D	Marion St & Arnold St	3 or more Deficiencies
53H	D		3 or more Deficiencies
54A	F	Marion St & Silver St	No Ramp
54C	B		1 Deficiency
54D	B		1 Deficiency
54E	D		3 or more Deficiencies
54F	D		3 or more Deficiencies
54G	B		1 Deficiency
54H	B		1 Deficiency
55B	F	Marion St & Townley St	No Ramp
55C	F		No Ramp
55D	F		No Ramp
55E	F		No Ramp
56	NONE	Marion St & Horton St	N/A
57	NONE	Marion St & Spring St	N/A
58B	F	Williams St & Lancaster St	No Ramp
58C	F		No Ramp
58D	F		No Ramp
58E	F		No Ramp
58F	F		No Ramp
58G	F		No Ramp
59A	C	Williams St & Drummond St	2 Deficiencies
59D	B		1 Deficiency
59E	B		1 Deficiency
59H	C		2 Deficiencies
60A	B	Williams St & Miller St	1 Deficiency
60B	B		1 Deficiency
60C	F		No Ramp
60D	C		2 Deficiencies
60E	F		No Ramp
60F	F		No Ramp
60G	F		No Ramp
60H	F		No Ramp
61A	F	Williams St & Water St	No Ramp
61D	F		No Ramp
61E	C		2 Deficiencies
61H	D		3 or more Deficiencies
62A	F	Williams St & Wabash St	No Ramp
62B	C		2 Deficiencies
62C	F		No Ramp
62D	F		No Ramp

Ramps			
Bluffton	Grade	Location	Description
62E	F	Williams St & Wabash St	No Ramp
62F	F		No Ramp
62G	B		1 Deficiency
62H	B		1 Deficiency
63A	C	Williams St & Perry St	2 Deficiencies
63D	C		2 Deficiencies
63E	C		2 Deficiencies
63H	F		No Ramp
64A	F	Williams St & Market St	No Ramp
64B	F		No Ramp
64C	C		2 Deficiencies
64D	F		No Ramp
64E	F		No Ramp
64F	C		2 Deficiencies
64G	F		No Ramp
64H	F		No Ramp
65A	B	Williams St & Walnut St	1 Deficiency
65D	B		1 Deficiency
65E	D		3 or more Deficiencies
65H	B		1 Deficiency
66A	D	Williams St & Washington St	3 or more Deficiencies
66B	F		No Ramp
66C	C		2 Deficiencies
66D	C		2 Deficiencies
66E	D		3 or more Deficiencies
66F	F		No Ramp
66G	D		3 or more Deficiencies
66H	F		No Ramp
67A	F	Williams St & Cherry St	No Ramp
67B	F		No Ramp
67C	F		No Ramp
67D	F		No Ramp
67E	F		No Ramp
67F	F		No Ramp
67G	B		1 Deficiency
67H	F		No Ramp
68	NONE	Williams St & Poplar St	N/A
69A	F	Williams St & South St	No Ramp
69B	C		2 Deficiencies
69C	A		ADA Compliant
69D	A		ADA Compliant
69E	C		2 Deficiencies
69F	F		No Ramp
69G	F		No Ramp
69H	F		No Ramp
70	NONE	Williams St & Riley St	N/A

Ramps			
Bluffton	Grade	Location	Description
71A	F	Williams St & Central Ave	No Ramp
71B	F		No Ramp
71C	C		2 Deficiencies
71D	C		2 Deficiencies
71E	D		3 or more Deficiencies
71F	F		No Ramp
71G	F		No Ramp
71H	F		No Ramp
72A	C	Williams St & Wiley Ave	2 Deficiencies
72B	B		1 Deficiency
72C	B		1 Deficiency
72E	C		2 Deficiencies
72F	C		2 Deficiencies
72G	C		2 Deficiencies
72H	C		2 Deficiencies
73A	B	Williams St & Ohio St	1 Deficiency
73B	F		No Ramp
73G	B		1 Deficiency
73H	F		No Ramp
74A	F	Williams St & Arnold St	No Ramp
74D	F		No Ramp
74E	F		No Ramp
74H	F		No Ramp
75A	F	Williams St & Silver St	No Ramp
75D	F		No Ramp
75E	C		2 Deficiencies
75F	F		No Ramp
75G	C		2 Deficiencies
75H	F		No Ramp
76A	F	Williams St & Townley St	No Ramp
76F	F		No Ramp
76G	F		No Ramp
76H	F		No Ramp
77A	F	Williams St & Horton St	No Ramp
77B	F		No Ramp
77C	F		No Ramp
77D	F		No Ramp
77E	F		No Ramp
77F	F		No Ramp
77G	F		No Ramp
77H	F		No Ramp
78B	A	Williams St & Spring St	ADA Compliant
78C	A		ADA Compliant
79A	F	Morgan St & Lancaster St	No Ramp
79D	F		No Ramp
79E	F		No Ramp
79F	F		No Ramp

Ramps			
Bluffton	Grade	Location	Description
79G	F	Morgan St & Lancaster St	No Ramp
79H	F		No Ramp
80A	F	Morgan St & Drummond St	No Ramp
80D	F		No Ramp
80E	C		2 Deficiencies
80H	F		No Ramp
81A	F	Morgan St & Miller St	No Ramp
81B	F		No Ramp
81C	F		No Ramp
81D	D		3 or more Deficiencies
81E	D		3 or more Deficiencies
81F	F		No Ramp
81G	D		3 or more Deficiencies
81H	F		No Ramp
82A	F	Morgan St & Water St	No Ramp
82D	F		No Ramp
82E	F		No Ramp
82H	F		No Ramp
83A	F	Morgan St & Wabash St	No Ramp
83B	F		No Ramp
83C	F		No Ramp
83D	F		No Ramp
83E	F		No Ramp
83F	F		No Ramp
83G	F		No Ramp
83H	F		No Ramp
84A	C	Morgan St & Perry St	2 Deficiencies
84D	C		2 Deficiencies
84E	F		No Ramp
84H	A		ADA Compliant
85A	F	Morgan St & Market St	No Ramp
85B	F		No Ramp
85C	F		No Ramp
85D	F		No Ramp
85E	F		No Ramp
85F	F		No Ramp
85G	C		2 Deficiencies
85H	F		No Ramp
86A	C	Morgan St & Walnut St	2 Deficiencies
86D	F		No Ramp
86E	C		2 Deficiencies
86H	F		No Ramp
87A	A	Morgan St & Washington St	ADA Compliant
87	NONE		No Ramp
87	NONE		No Ramp
87D	A		ADA Compliant
87E	A		ADA Compliant

Ramps			
Bluffton	Grade	Location	Description
87F	A	Morgan St & Washington St	ADA Compliant
87G	A		ADA Compliant
87H	A		ADA Compliant
88A	F	Morgan St & Cherry St	No Ramp
88B	F		No Ramp
88C	C		2 Deficiencies
88D	B		1 Deficiency
88E	F		No Ramp
88F	F		No Ramp
88G	C		2 Deficiencies
88H	F		No Ramp
89	NONE	Morgan St & Poplar St	N/A
90A	F	Morgan St & South St	No Ramp
90B	F		No Ramp
90C	D		3 or more Deficiencies
90D	F		No Ramp
90E	F		No Ramp
90F	F		No Ramp
90G	F		No Ramp
90H	F		No Ramp
91	NONE	Morgan St & Riley St	N/A
92A	F	Morgan St & Central Ave	No Ramp
92B	F		No Ramp
92C	A		ADA Compliant
92D	A		ADA Compliant
92E	D		3 or more Deficiencies
92F	F		No Ramp
92G	F		No Ramp
92H	F		No Ramp
93A	C	Morgan St & Wiley Ave	2 Deficiencies
93B	C		2 Deficiencies
93C	C		2 Deficiencies
93D	F		No Ramp
93E	F		No Ramp
93F	F		No Ramp
93G	D		3 or more Deficiencies
93H	D		3 or more Deficiencies
94A	C	Morgan St & Ohio St	2 Deficiencies
94B	C		2 Deficiencies
94C	C		2 Deficiencies
94D	C		2 Deficiencies
94E	C		2 Deficiencies
94F	C		2 Deficiencies
94G	C		2 Deficiencies
94H	C		2 Deficiencies

Ramps			
Bluffton	Grade	Location	Description
95A	F	Morgan St & Arnold St	No Ramp
95C	F		No Ramp
95D	F		No Ramp
95E	F		No Ramp
95H	F		No Ramp
96A	F	Morgan St & Silver St	No Ramp
96D	F		No Ramp
96E	D		3 or more Deficiencies
96F	F		No Ramp
96G	D		3 or more Deficiencies
96H	F	Morgan St & Townley St	No Ramp
97A	F		No Ramp
97B	F		No Ramp
97C	F		No Ramp
97F	F		No Ramp
97G	D	Morgan St & Horton St	3 or more Deficiencies
97H	F		No Ramp
98A	F		No Ramp
98F	F		No Ramp
98G	F		No Ramp
98H	F	Morgan St & Spring St	No Ramp
99B	A		ADA Compliant
99C	A	Oak St & Drummond St	ADA Compliant
100E	F		No Ramp
101D	C	Oak St & Miller St	2 Deficiencies
101E	F		No Ramp
102D	F	Oak St & Water St	No Ramp
102E	D		3 or more Deficiencies
103A	F	Oak St & Wabash St	No Ramp
103C	F		No Ramp
103D	F		No Ramp
103E	F		No Ramp
103F	F		No Ramp
103G	F		No Ramp
103H	F		No Ramp
104A	C	Oak St & Perry St	2 Deficiencies
104D	C		2 Deficiencies
104E	C		2 Deficiencies
104H	F		No Ramp
105B	C	Oak St & Market St	2 Deficiencies
105C	F		No Ramp
105F	F		No Ramp
105G	F		No Ramp
106D	F	Oak St & Walnut St	No Ramp
106E	F		No Ramp

Ramps			
Bluffton	Grade	Location	Description
107A	A	Oak St & Washington St	ADA Compliant
107B	A		ADA Compliant
107C	A		ADA Compliant
107D	A		ADA Compliant
107E	A		ADA Compliant
107F	A		ADA Compliant
107G	A		ADA Compliant
107H	F		No Ramp
108	NONE	Oak St & Cherry St	No Ramp
108B	C		2 Deficiencies
108C	C		2 Deficiencies
108D	C		2 Deficiencies
108E	C		2 Deficiencies
108F	C		2 Deficiencies
108G	C		2 Deficiencies
108	NONE		No Ramp
109	NONE	Oak St & Poplar St	N/A
110A	F	Oak St & South St	No Ramp
110B	F		No Ramp
110C	F		No Ramp
110D	F		No Ramp
110E	F		No Ramp
110F	F		No Ramp
110G	F		No Ramp
110H	F		No Ramp
111	NONE	Oak St & Riley St	N/A
112D	F	Oak St & Central Ave	No Ramp
112E	C		2 Deficiencies
113A	F	Oak St & Wiley Ave	No Ramp
113B	F		No Ramp
113C	D		3 or more Deficiencies
113D	D		3 or more Deficiencies
113E	C		2 Deficiencies
113F	F		No Ramp
113G	F		No Ramp
113H	C		2 Deficiencies
114A	C	Oak St & Ohio St	2 Deficiencies
114B	F		No Ramp
114C	C		2 Deficiencies
114D	F		No Ramp
114F	C		2 Deficiencies
114G	F		No Ramp
114H	C		2 Deficiencies
115A	D	Oak St & Arnold St	3 or more Deficiencies
115D	F		No Ramp
115E	F		No Ramp
115H	F		No Ramp

Ramps			
Bluffton	Grade	Location	Description
116A	F	Oak St & Silver St	No Ramp
116F	D		3 or more Deficiencies
116G	D		3 or more Deficiencies
116H	F		No Ramp
117A	D	Oak St & Townley St	3 or more Deficiencies
117D	F		No Ramp
117E	D		3 or more Deficiencies
117H	F		No Ramp
118A	F	Oak St & Horton St	No Ramp
118F	A		ADA Compliant
118G	F		No Ramp
118H	F		No Ramp
119B	A	Oak St & Spring St	ADA Compliant
119C	A		ADA Compliant
120F	F	Jersey St & Washington St	No Ramp
120G	F		No Ramp
121A	F	Jersey St & Cherry St	No Ramp
121B	C		2 Deficiencies
121C	F		No Ramp
121D	F		No Ramp
121E	F		No Ramp
121F	C		2 Deficiencies
121G	D		3 or more Deficiencies
121H	D		3 or more Deficiencies
122	NONE	Jersey St & Poplar St	N/A
123A	F	Jersey St & South St	No Ramp
123B	F		No Ramp
123C	F		No Ramp
123D	F		No Ramp
123E	D		3 or more Deficiencies
123F	F		No Ramp
123G	F		No Ramp
123H	F		No Ramp
124	NONE	Jersey St & Riley St	N/A
125	NONE	Jersey St & Central Ave	N/A
126A	F	Jersey St & Wiley Ave	No Ramp
126B	F		No Ramp
126C	F		No Ramp
126D	F		No Ramp
126E	C		2 Deficiencies
126F	C		2 Deficiencies
126G	F		No Ramp
126H	F		No Ramp
127C	C	Jersey St & Ohio St	2 Deficiencies
127D	F		No Ramp
127G	F		No Ramp
127H	F		No Ramp

Ramps			
Bluffton	Grade	Location	Description
128A	F	Jersey St & Arnold St	No Ramp
128B	D		3 or more Deficiencies
128C	F		No Ramp
128D	F		No Ramp
128E	F		No Ramp
128F	F		No Ramp
128G	F		No Ramp
128H	F		No Ramp
129A	A	Jersey St & Silver St	ADA Compliant
129B	A		ADA Compliant
129C	F		No Ramp
129D	F		No Ramp
129E	F		No Ramp
129F	F		No Ramp
129G	F		No Ramp
129H	F		No Ramp
130A	F	Jersey St & Townley St	No Ramp
130D	F		No Ramp
130E	F		No Ramp
130H	F		No Ramp
131A	F	Jersey St & Horton St	No Ramp
131D	F		No Ramp
131E	F		No Ramp
131H	F		No Ramp
132B	A	Jersey St & Spring St	ADA Compliant
132C	A		ADA Compliant
133D	A	Road to Pool & Spring St	ADA Compliant
134F	C	Indiana St & Wabash St	2 Deficiencies
134G	C		2 Deficiencies
135B	C	Indiana St & Market St	2 Deficiencies
135C	C		2 Deficiencies
135F	D		3 or more Deficiencies
135G	F		No Ramp
136B	F	Indiana St & Washington St	No Ramp
136C	F		No Ramp
137E	A	Indiana St & South St	ADA Compliant
137F	D		3 or more Deficiencies
138B	F	Indiana St & Wiley Ave	No Ramp
138C	F		No Ramp
138D	F		No Ramp
138E	F		No Ramp
138F	F		No Ramp
138G	F		No Ramp
139	NONE	Indiana St & Ohio St	N/A
140A	F	Indiana St & Silver St	No Ramp
140B	F		No Ramp
140C	A		ADA Compliant

Ramps			
Bluffton	Grade	Location	Description
140F	F	Indiana St & Silver St	No Ramp
140G	F		No Ramp
140H	F		No Ramp
141G	C	Union St & Lancaster St	2 Deficiencies
142A	F	Union St & Wabash St	No Ramp
142B	F		No Ramp
142C	F		No Ramp
142D	F		No Ramp
142E	F		No Ramp
142F	F		No Ramp
142G	F		No Ramp
142H	F		No Ramp
143A	D	Union St & Market St	3 or more Deficiencies
143B	D		3 or more Deficiencies
143C	D		3 or more Deficiencies
143D	D		3 or more Deficiencies
143E	D		3 or more Deficiencies
143F	D		3 or more Deficiencies
143G	D		3 or more Deficiencies
143H	D		3 or more Deficiencies
144A	D	Union St & Washington St	3 or more Deficiencies
144B	D		3 or more Deficiencies
144C	D		3 or more Deficiencies
144D	D		3 or more Deficiencies
144E	D		3 or more Deficiencies
144F	D		3 or more Deficiencies
144G	D		3 or more Deficiencies
144H	D		3 or more Deficiencies
145A	F	Union St & Cherry St	No Ramp
145B	D		3 or more Deficiencies
145C	D		3 or more Deficiencies
145D	F		No Ramp
145E	F		No Ramp
145F	F		No Ramp
145G	F		No Ramp
145H	F		No Ramp
146A	D	Union St & South St	3 or more Deficiencies
146B	D		3 or more Deficiencies
146C	D		3 or more Deficiencies
146D	D		3 or more Deficiencies
146E	D		3 or more Deficiencies
146F	D		3 or more Deficiencies
146G	D		3 or more Deficiencies
146H	D		3 or more Deficiencies
147G	F	Baldwin St & Lancaster St	No Ramp

Ramps			
Bluffton	Grade	Location	Description
148A	D	Baldwin St & Wabash St	3 or more Deficiencies
148B	D		3 or more Deficiencies
148C	D		3 or more Deficiencies
148D	D		3 or more Deficiencies
148E	D		3 or more Deficiencies
148F	D		3 or more Deficiencies
148G	D		3 or more Deficiencies
148H	D		3 or more Deficiencies
149A	D	Baldwin St & Market St	3 or more Deficiencies
149B	D		3 or more Deficiencies
149C	D		3 or more Deficiencies
149D	D		3 or more Deficiencies
149E	D		3 or more Deficiencies
149F	D		3 or more Deficiencies
149G	D		3 or more Deficiencies
149H	D		3 or more Deficiencies
150A	D	Baldwin St & Washington St	3 or more Deficiencies
150B	D		3 or more Deficiencies
150C	F		No Ramp
150D	D		3 or more Deficiencies
150E	F		No Ramp
150F	F		No Ramp
150G	D		3 or more Deficiencies
150H	D		3 or more Deficiencies
151A	D	Baldwin St & Cherry St	3 or more Deficiencies
151B	D		3 or more Deficiencies
151C	D		3 or more Deficiencies
151D	D		3 or more Deficiencies
151E	D		3 or more Deficiencies
151F	D		3 or more Deficiencies
151G	D		3 or more Deficiencies
151H	D		3 or more Deficiencies
152A	D	Baldwin St & South St	3 or more Deficiencies
152B	D		3 or more Deficiencies
152C	D		3 or more Deficiencies
152D	D		3 or more Deficiencies
152E	D		3 or more Deficiencies
152F	D		3 or more Deficiencies
152G	D		3 or more Deficiencies
152H	D		3 or more Deficiencies
153A	A	Baldwin St & Central Ave	ADA Compliant
153B	A		ADA Compliant
153C	F		No Ramp
153G	D		3 or more Deficiencies
153H	D		3 or more Deficiencies
154	NONE	Baldwin St & Wiley Ave	N/A

Ramps			
Bluffton	Grade	Location	Description
155F	F	Bond St & Lancaster St	No Ramp
155G	F		No Ramp
156D	F	Bond St & Wabash St	No Ramp
156E	F		No Ramp
157C	F	Bond St & Market St	No Ramp
157D	D		3 or more Deficiencies
157E	D		3 or more Deficiencies
157F	F		No Ramp
157G	C		2 Deficiencies
157H	C		2 Deficiencies
158A	D	Bond St & Washington St	3 or more Deficiencies
158C	F		No Ramp
158D	D		3 or more Deficiencies
158E	F		No Ramp
158F	F		No Ramp
158G	F		No Ramp
158H	F		No Ramp
159A	D	Bond St & Cherry St	3 or more Deficiencies
159B	F		No Ramp
159C	D		3 or more Deficiencies
159D	D		3 or more Deficiencies
159E	C		2 Deficiencies
159F	F		No Ramp
159G	D		3 or more Deficiencies
159H	F		No Ramp
160B	F	Bond St & South St	No Ramp
160C	D		3 or more Deficiencies
160E	D		3 or more Deficiencies
160F	D		3 or more Deficiencies
160G	F		No Ramp
161A	C	Bond St & Central Ave	2 Deficiencies
161B	F		No Ramp
161C	D		3 or more Deficiencies
161D	D		3 or more Deficiencies
161G	F		No Ramp
161H	C		2 Deficiencies
162A	D	Bond St & Wiley Ave	3 or more Deficiencies
162B	F		No Ramp
162C	F		No Ramp
162F	F		No Ramp
162G	F		No Ramp
162H	D		3 or more Deficiencies
163A	F	Bond St & Jefferson Ave	No Ramp
164E	F	Walmer St & Washington St	No Ramp
164F	F		No Ramp
164G	F		No Ramp

Ramps			
Bluffton	Grade	Location	Description
165A	F	Walmer St & Cherry St	No Ramp
165B	F		No Ramp
165C	F		No Ramp
165D	F		No Ramp
165E	F		No Ramp
165F	F		No Ramp
165G	C		2 Deficiencies
165H	F		No Ramp
166B	F	Walmer St & South St	No Ramp
166C	F		No Ramp
166F	F		No Ramp
166G	F		No Ramp
167B	F	Walmer St & Central Ave	No Ramp
167C	F		No Ramp
168E	C	Dougherty St & Central Ave	2 Deficiencies
168F	F		No Ramp
168G	D		3 or more Deficiencies
168H	D		3 or more Deficiencies
169A	F	Dougherty St & Wiley Ave	No Ramp
169B	D		3 or more Deficiencies
169C	D		3 or more Deficiencies
169D	F		No Ramp
169E	F		No Ramp
169F	D		3 or more Deficiencies
169G	F		No Ramp
169H	F		No Ramp
170A	F	Dougherty St & Jefferson Ave	No Ramp
170D	F		No Ramp
170H	F		No Ramp
171	NONE	Beth St & Lancaster St	N/A
172	NONE	Beth St & Wabash St	N/A
173	NONE	Beth St & Market St	N/A
174A	F	Beth St & Washington St	No Ramp
174B	F		No Ramp
174C	F		No Ramp
174D	F		No Ramp
174E	A		ADA Compliant
174F	F		No Ramp
174G	D		3 or more Deficiencies
174H	F		No Ramp
175A	D	Beth St & Cherry St	3 or more Deficiencies
175B	F		No Ramp
175C	F		No Ramp
175H	F		No Ramp
176A	F	Beth St & South St	No Ramp
176B	D		3 or more Deficiencies
176C	D		3 or more Deficiencies

Ramps			
Bluffton	Grade	Location	Description
176F	D	Beth St & South St	3 or more Deficiencies
176G	D		3 or more Deficiencies
176H	F		No Ramp
177A	D	Beth St & Central Ave	3 or more Deficiencies
177B	F		No Ramp
177C	F		No Ramp
177D	D		3 or more Deficiencies
177E	D		3 or more Deficiencies
177F	D		3 or more Deficiencies
177G	D		3 or more Deficiencies
177H	D		3 or more Deficiencies
178B	F	Beth St & Wiley Ave	No Ramp
178C	F		No Ramp
178D	F		No Ramp
178E	F		No Ramp
178F	D		3 or more Deficiencies
178G	F		No Ramp
179A	F	Beth St & Jefferson Ave	No Ramp
179F	F		No Ramp
180A	A	Elm St & State Rd 1	ADA Compliant
180B	F		No Ramp
180C	C		2 Deficiencies
180D	A		ADA Compliant
180E	A		ADA Compliant
180F	F		No Ramp
180G	F		No Ramp
180H	A		ADA Compliant
181A	C	Elm St & Johnson St	2 Deficiencies
181D	C		2 Deficiencies
181E	C		2 Deficiencies
181H	F		No Ramp
182A	C	Elm St & Marion St	2 Deficiencies
182D	F		No Ramp
182E	D		3 or more Deficiencies
182H	C		2 Deficiencies
183	NONE	Elm St & Williams St	N/A
184	NONE	Elm St & Morgan St	N/A
185	NONE	Elm St & Oak St	N/A
186	NONE	Elm St & Jersey St	N/A
187C	F	Midway St & Cherry St	No Ramp
187F	F		No Ramp
188C	F	Midway St & South St	No Ramp
188F	F		No Ramp
189C	C	Midway St & Central St	2 Deficiencies
189F	F		No Ramp

Ramps			
Bluffton	Grade	Location	Description
190A	B	Scott St & Wabash St	1 Deficiency
190B	B		1 Deficiency
190C	A		ADA Compliant
190D	A		ADA Compliant
190E	B		1 Deficiency
190F	B		1 Deficiency
190G	B		1 Deficiency
190H	B		1 Deficiency
191A	F	Scott St & Perry St	No Ramp
191B	C		2 Deficiencies
191C	F		No Ramp
191D	C		2 Deficiencies
191E	C		2 Deficiencies
191F	F		No Ramp
191G	F		No Ramp
191H	F		No Ramp
192A	B	Scott St & Market St	1 Deficiency
192B	F		No Ramp
192C	F		No Ramp
192D	C		2 Deficiencies
192E	C		2 Deficiencies
192F	C		2 Deficiencies
192G	A		ADA Compliant
192H	A		ADA Compliant
193A	A	Scott St & Walnut St	ADA Compliant
193D	NONE		No Ramp
193E	NONE		No Ramp
193H	A		ADA Compliant
194A	A	Scott St & Washington St	ADA Compliant
194B	A		ADA Compliant
194C	A		ADA Compliant
194D	A		ADA Compliant
194E	C		2 Deficiencies
194F	C		2 Deficiencies
194G	C		2 Deficiencies
194H	C		2 Deficiencies
195D	D	Scott St & Elm St	3 or more Deficiencies
195E	D		3 or more Deficiencies
196A	F	Scott St & Cherry St	No Ramp
196B	F		No Ramp
196C	F		No Ramp
196D	C		2 Deficiencies
196E	C		2 Deficiencies
196F	F		No Ramp
196G	C		2 Deficiencies
196H	F		No Ramp

Ramps			
Bluffton	Grade	Location	Description
197A	D	Scott St & Poplar St	3 or more Deficiencies
197D	D		3 or more Deficiencies
197E	F		No Ramp
197H	D		3 or more Deficiencies
198A	F	Scott St & South St	No Ramp
198B	F		No Ramp
198C	A		ADA Compliant
198D	A		ADA Compliant
198E	F		No Ramp
198F	F		No Ramp
198G	F		No Ramp
198H	F		No Ramp
199A	F	Scott St & Riley St	No Ramp
199D	F		No Ramp
199E	F		No Ramp
199H	F		No Ramp
200A	C	Scott St & Central Ave	2 Deficiencies
200B	C		2 Deficiencies
200C	F		No Ramp
200D	F		No Ramp
200E	F		No Ramp
200F	F		No Ramp
200G	D		3 or more Deficiencies
200H	F		No Ramp
201A	F	Scott St & Wiley Ave	No Ramp
201B	F		No Ramp
201C	A		ADA Compliant
201D	A		ADA Compliant
201E	F		No Ramp
201F	F		No Ramp
201G	F		No Ramp
201H	F		No Ramp
202A	F	Scott St & Ohio St	No Ramp
202B	F		No Ramp
202C	C		2 Deficiencies
202D	F		No Ramp
202E	D		3 or more Deficiencies
202F	D		3 or more Deficiencies
202G	F		No Ramp
202H	F		No Ramp
203A	D	Scott St & Arnold St	3 or more Deficiencies
203B	D		3 or more Deficiencies
203C	F		No Ramp
203D	F		No Ramp
203E	F		No Ramp
203F	F		No Ramp
203G	D		3 or more Deficiencies

Ramps			
Bluffton	Grade	Location	Description
203H	D	Scott St & Arnold St	3 or more Deficiencies
204A	A	Scott St & Silver St	ADA Compliant
204B	A		ADA Compliant
204C	A		ADA Compliant
204D	A		ADA Compliant
204E	A		ADA Compliant
204F	A		ADA Compliant
204G	A		ADA Compliant
204H	A		ADA Compliant
205A	A	Scott St & Townley St	ADA Compliant
205B	A		ADA Compliant
205C	A		ADA Compliant
205D	A		ADA Compliant
205E	A		ADA Compliant
205F	A		ADA Compliant
205G	A		ADA Compliant
205H	A		ADA Compliant
206A	F	Scott St & Horton St	No Ramp
206B	F		No Ramp
206C	D		3 or more Deficiencies
206D	D		3 or more Deficiencies
206E	D		3 or more Deficiencies
206F	D		3 or more Deficiencies
206G	D		3 or more Deficiencies
206H	D		3 or more Deficiencies
207B	F	Scott St & Spring St	No Ramp
207C	F		No Ramp
208E	D	Bennett St & Perry St	3 or more Deficiencies
208H	D		3 or more Deficiencies
209A	F	Bennett St & Market St	No Ramp
209B	C		2 Deficiencies
209C	C		2 Deficiencies
209D	C		2 Deficiencies
209E	C		2 Deficiencies
209F	C		2 Deficiencies
209G	C		2 Deficiencies
209H	F		No Ramp
210A	D	Bennett St & Walnut St	3 or more Deficiencies
210D	D		3 or more Deficiencies
210E	C		2 Deficiencies
210H	C		2 Deficiencies
211A	F	Bennett St & Washington St	No Ramp
211B	C		2 Deficiencies
211C	B		1 Deficiency
211D	B		1 Deficiency
211E	D		3 or more Deficiencies
211F	F		No Ramp

Ramps			
Bluffton	Grade	Location	Description
211G	C	Bennett St & Washington St	2 Deficiencies
211H	D		3 or more Deficiencies
212A	F	Bennett St & Elm St	No Ramp
212B	C		2 Deficiencies
212C	B		1 Deficiency
212D	F		No Ramp
212E	F		No Ramp
212F	D		3 or more Deficiencies
212G	F		No Ramp
212H	F		No Ramp
213A	A	Bennett St & Cherry St	ADA Compliant
213B	A		ADA Compliant
213C	A		ADA Compliant
213D	A		ADA Compliant
213E	A		ADA Compliant
213F	C		2 Deficiencies
213G	D		3 or more Deficiencies
213H	A		ADA Compliant
214A	A	Bennett St & Poplar St	ADA Compliant
214D	A		ADA Compliant
214E	A		ADA Compliant
214H	A		ADA Compliant
215A	A	Bennett St & South St	ADA Compliant
215B	A		ADA Compliant
215C	A		ADA Compliant
215D	C		2 Deficiencies
215E	F		No Ramp
215F	A		ADA Compliant
215G	A		ADA Compliant
215H	A		ADA Compliant
216A	F	Bennett St & Riley St	No Ramp
216D	D		3 or more Deficiencies
216E	F		No Ramp
216H	F		No Ramp
217A	D	Bennett St & Central Ave	3 or more Deficiencies
217B	D		3 or more Deficiencies
217C	F		No Ramp
217D	D		3 or more Deficiencies
217E	D		3 or more Deficiencies
217F	D		3 or more Deficiencies
217G	D		3 or more Deficiencies
217H	D		3 or more Deficiencies
218A	F	Bennett St & Wiley Ave	No Ramp
218B	F		No Ramp
218C	F		No Ramp
218D	F		No Ramp
218E	F		No Ramp

Ramps			
Bluffton	Grade	Location	Description
218F	A	Bennett St & Wiley Ave	ADA Compliant
218G	A		ADA Compliant
218H	F		No Ramp
219A	A	Bennett St & Ohio St	ADA Compliant
219B	A		ADA Compliant
219C	A		ADA Compliant
219D	F		No Ramp
219E	A		ADA Compliant
219F	A		ADA Compliant
219G	A		ADA Compliant
219H	A		ADA Compliant
220A	A	Bennett St & Arnold St	ADA Compliant
220B	A		ADA Compliant
220C	A		ADA Compliant
220D	D		3 or more Deficiencies
220E	F		No Ramp
220F	A		ADA Compliant
220G	A		ADA Compliant
220H	A		ADA Compliant
221A	A	Bennett St & Silver St	ADA Compliant
221B	A		ADA Compliant
221C	A		ADA Compliant
221D	D		3 or more Deficiencies
221E	F		No Ramp
221F	A		ADA Compliant
221G	A		ADA Compliant
221H	A		ADA Compliant
222A	A	Bennett St & Townley St	ADA Compliant
222B	A		ADA Compliant
222C	A		ADA Compliant
222D	F		No Ramp
222E	F		No Ramp
222F	A		ADA Compliant
222G	A		ADA Compliant
222H	A		ADA Compliant
223A	D	Bennett St & Horton St	3 or more Deficiencies
223B	D		3 or more Deficiencies
223C	D		3 or more Deficiencies
223D	D		3 or more Deficiencies
223E	F		No Ramp
223F	F		No Ramp
223G	F		No Ramp
223H	F		No Ramp
224B	F	Bennett St & Spring St	No Ramp
224C	F		No Ramp
225F	C	Mulberry St & Market St	2 Deficiencies
225G	C		2 Deficiencies

Ramps			
Bluffton	Grade	Location	Description
225H	F	Mulberry St & Market St	No Ramp
226A	D	Mulberry St & Walnut St	3 or more Deficiencies
226D	D		3 or more Deficiencies
226E	D		3 or more Deficiencies
226H	D		3 or more Deficiencies
227A	D	Mulberry St & Washington St	3 or more Deficiencies
227B	D		3 or more Deficiencies
227C	F		No Ramp
227D	F		No Ramp
227E	A		ADA Compliant
227F	A		ADA Compliant
227G	A		ADA Compliant
227H	D	Mulberry St & Elm St	3 or more Deficiencies
228A	D		3 or more Deficiencies
228D	D		3 or more Deficiencies
228E	C		2 Deficiencies
228H	F	Mulberry St & Cherry St	No Ramp
229A	F		No Ramp
229B	F		No Ramp
229C	D		3 or more Deficiencies
229D	F		No Ramp
229E	F		No Ramp
229F	F		No Ramp
229G	D		3 or more Deficiencies
229H	F	Mulberry St & Poplar St	No Ramp
230A	D		3 or more Deficiencies
230D	F		No Ramp
230E	F		No Ramp
230H	F	Mulberry St & South St	No Ramp
231A	A		ADA Compliant
231B	A		ADA Compliant
231C	F		No Ramp
231D	F		No Ramp
231E	F		No Ramp
231F	F		No Ramp
231G	F		No Ramp
231H	F	Mulberry St & Riley St	No Ramp
232A	F		No Ramp
232D	F		No Ramp
232E	F		No Ramp
232H	D	Mulberry St & Central Ave	3 or more Deficiencies
233A	F		No Ramp
233B	F		No Ramp
233C	D		3 or more Deficiencies
233D	D		3 or more Deficiencies
233E	F		No Ramp
233F	F		No Ramp

Ramps			
Bluffton	Grade	Location	Description
233G	F	Mulberry St & Central Ave	No Ramp
233H	F		No Ramp
234A	A	Mulberry St & Wiley Ave	ADA Compliant
234B	A		ADA Compliant
234C	D		3 or more Deficiencies
234D	F		No Ramp
234E	F		No Ramp
234F	F		No Ramp
234G	F		No Ramp
234H	F		No Ramp
235A	F	Mulberry St & Ohio St	No Ramp
235B	D		3 or more Deficiencies
235C	C		2 Deficiencies
235D	F		No Ramp
235E	F		No Ramp
235F	F		No Ramp
235G	A		ADA Compliant
235H	F		No Ramp
236A	A	Mulberry St & Arnold St	ADA Compliant
236B	A		ADA Compliant
236C	D		3 or more Deficiencies
236D	D		3 or more Deficiencies
236E	F		No Ramp
236F	F		No Ramp
236G	F		No Ramp
236H	C		2 Deficiencies
237A	F	Mulberry St & Silver St	No Ramp
237B	D		3 or more Deficiencies
237C	D		3 or more Deficiencies
237D	D		3 or more Deficiencies
237E	F		No Ramp
237F	F		No Ramp
237G	F		No Ramp
237H	F		No Ramp
238A	F	Mulberry St & Townley St	No Ramp
238B	F		No Ramp
238C	D		3 or more Deficiencies
238D	F		No Ramp
238E	F		No Ramp
238F	F		No Ramp
238G	F		No Ramp
238H	F		No Ramp
239A	F	Mulberry St & Horton St	No Ramp
239B	F		No Ramp
239C	D		3 or more Deficiencies
239D	D		3 or more Deficiencies
239E	A		ADA Compliant

Ramps			
Bluffton	Grade	Location	Description
239F	F	Mulberry St & Horton St	No Ramp
239G	F		No Ramp
239H	F		No Ramp
240B	F	Mulberry St & Spring St	No Ramp
240C	F		No Ramp
241	NONE	Liberty St & Market St	N/A
242	NONE	Liberty St & Walnut St	N/A
243D	C	Liberty St & Washington St	2 Deficiencies
243E	F		No Ramp
243F	F		No Ramp
243G	F		No Ramp
244A	D	Liberty St & Elm St	3 or more Deficiencies
244D	C		2 Deficiencies
244E	C		2 Deficiencies
244H	D		3 or more Deficiencies
245A	D	Liberty St & Riley St	3 or more Deficiencies
245D	C		2 Deficiencies
245E	C		2 Deficiencies
245H	D		3 or more Deficiencies
246A	D	Liberty St & Cherry St	3 or more Deficiencies
246B	D		3 or more Deficiencies
246C	D		3 or more Deficiencies
246D	D		3 or more Deficiencies
246E	D		3 or more Deficiencies
246F	D		3 or more Deficiencies
246G	C		2 Deficiencies
246H	C		2 Deficiencies
247A	D	Liberty St & Poplar St	3 or more Deficiencies
247H	F		No Ramp
248A	C	Liberty St & South St	2 Deficiencies
248B	C		2 Deficiencies
248C	D		3 or more Deficiencies
248D	F		No Ramp
248E	D		3 or more Deficiencies
248F	D		3 or more Deficiencies
248G	C		2 Deficiencies
248H	C		2 Deficiencies
249A	C	Liberty St & Central Ave	2 Deficiencies
249B	C		2 Deficiencies
249C	D		3 or more Deficiencies
249D	D		3 or more Deficiencies
249E	F		No Ramp
249F	C		2 Deficiencies
249G	C		2 Deficiencies
249H	F		No Ramp

Ramps			
Bluffton	Grade	Location	Description
250A	F	Liberty St & Wiley Ave	No Ramp
250B	F		No Ramp
250C	F		No Ramp
250D	F		No Ramp
250E	F		No Ramp
250F	F		No Ramp
250G	F		No Ramp
250H	F		No Ramp
251B	D	Liberty St & Ohio St	3 or more Deficiencies
251G	F		No Ramp
252B	A	Liberty St & Arnold St	ADA Compliant
252C	D		3 or more Deficiencies
252F	F		No Ramp
252G	F		No Ramp
253B	D	Liberty St & Silver St	3 or more Deficiencies
253C	F		No Ramp
253F	F		No Ramp
253G	F		No Ramp
254B	F	Liberty St & Townley St	No Ramp
254C	F		No Ramp
254F	F		No Ramp
254G	F		No Ramp
255B	F	Liberty St & Horton St	No Ramp
255C	D		3 or more Deficiencies
255F	F		No Ramp
255G	F		No Ramp
256B	F	Liberty St & Spring St	No Ramp
256C	F		No Ramp
257	NONE	Wayne St & Market St	N/A
258B	A	Wayne St & Washington St	ADA Compliant
258G	D		3 or more Deficiencies
259B	D	Wayne St & Cherry St	3 or more Deficiencies
259G	F		No Ramp
260B	F	Wayne St & South St	No Ramp
260G	D		3 or more Deficiencies
261B	F	Wayne St & Central Ave	No Ramp
261G	F		No Ramp
262B	F	Wayne St & Wiley Ave	No Ramp
262G	F		No Ramp
263B	F	Wayne St & Ohio St	No Ramp
263G	F		No Ramp
264B	F	Wayne St & Arnold St	No Ramp
264G	F		No Ramp
265B	F	Wayne St & Silver St	No Ramp
265G	F		No Ramp
266B	F	Wayne St & Townley St	No Ramp
266G	F		No Ramp

Ramps			
Bluffton	Grade	Location	Description
267A	F	Wayne St & Horton St	No Ramp
267B	F		No Ramp
267G	F		No Ramp
267H	D		3 or more Deficiencies
268B	C	Wayne St & Spring St	2 Deficiencies
268F	A		ADA Compliant
269B	B	Wayne St & Harrison St	1 Deficiency
269D	A		ADA Compliant
270A	A	Stogdill Rd & River Rd	ADA Compliant
271A	A	Stogdill Rd & Sycamore Ln	ADA Compliant
272A	A	Stogdill Rd & Summit Ave	ADA Compliant
273H	A	Stogdill Rd & Echo Ln	ADA Compliant
274A	A	Stogdill Rd & Spring St	ADA Compliant
274G	B		1 Deficiency
274H	A		ADA Compliant
275A	A	Stogdill Rd & Honeysuckle Ln	ADA Compliant
275H	A		ADA Compliant
276A	A	Stogdill Rd & Hollyhock Ln	ADA Compliant
276H	A		ADA Compliant
277A	B	Stogdill Rd & School Dr	1 Deficiency
278E	F	Westgate Rd & Lancaster St	No Ramp
278H	F		No Ramp
279D	A	Westgate Rd & Hi-Lo Dr	ADA Compliant
279E	A		ADA Compliant
280D	A	Westgate Rd & Woodlawn	ADA Compliant
280E	A		ADA Compliant
281A	F	Westgate Rd & Washington St	No Ramp
281D	F		No Ramp
282B	F	Hi-Lo Dr & Woodlawn	No Ramp
282C	F		No Ramp
283	NONE	Columbian Ave & Lancaster St	N/A
284D	A	Columbian Ave & Sunnyglenn Ct	ADA Compliant
284E	A		ADA Compliant
285A	A	Columbian Ave & Woodlawn	ADA Compliant
285H	A		ADA Compliant
286A	F	Columbian Ave & Washington St	No Ramp
286D	F		No Ramp
287F	F	Virginia Ct & Lancaster St	No Ramp
287G	F		No Ramp
288D	F	Garden Ln & Sunset Dr	No Ramp
288E	F		No Ramp
289F	D	Lakeside Ct & Sunset Dr	3 or more Deficiencies
290A	F	Garden Ln & Sunrise Way	No Ramp
290H	F		No Ramp
291F	A	Dustman Rd & Sunrise Way	ADA Compliant
291G	A		ADA Compliant

Ramps			
Bluffton	Grade	Location	
292F	A	Dustman Rd & Sunset Dr	ADA Compliant
292G	A		ADA Compliant
324B	C	Greenfield Ln & Wheatfield Ct	2 Deficiencies
324C	C		2 Deficiencies
325E	F	Greenfield Ln & Clark Ave	No Ramp
326A	A	Red Oak & Oak Forrest	ADA Compliant
326B	A	Red Oak & Oak Forrest	ADA Compliant
326C	A	Red Oak & Oak Forrest	ADA Compliant
326D	A	Red Oak & Oak Forrest	ADA Compliant
326E	F	Red Oak & Oak Forrest	No Ramp
326F	F	Red Oak & Oak Forrest	No Ramp
326G	A	Red Oak & Oak Forrest	ADA Compliant
326H	A	Red Oak & Oak Forrest	ADA Compliant
327A	A	Topaz & Dogwood CT	ADA Compliant
327B	A	Topaz & Dogwood CT	ADA Compliant
327C	A	Topaz & Dogwood CT	ADA Compliant
327D	A	Topaz & Dogwood CT	ADA Compliant
328F	A	Topaz & Sondbird	ADA Compliant
328G	A	Topaz & Sondbird	ADA Compliant
329A	A	Topaz & Stillwater	ADA Compliant
329B	A	Topaz & Stillwater	ADA Compliant
329C	A	Topaz & Stillwater	ADA Compliant
329D	A	Topaz & Stillwater	ADA Compliant
326A	A	St 1 & Monroe	ADA Compliant
326B	A	Sr1 & Monroe	ADA Compliant
326C	A	Sr1 & Monroe	ADA Compliant
326D	A	Sr1 & Monroe	ADA Compliant
326E	A	Sr1 & Monroe	ADA Compliant
326F	A	Sr1 & Monroe	ADA Compliant
326G	A	Sr1 & Monroe	ADA Compliant
326H	A	Sr1 & Monroe	ADA Compliant
327B	A	Sr1 WillowBrook	ADA Compliant
327C	A	Sr1 & WillowBrook	ADA Compliant
327B	A	Sri & WillowBrook	ADA Compliant
327C	A	Sr1 & WillowBrook	ADA Compliant
328A	A	Trail & Madison	ADA Compliant
328H	A	Trail & Madison	ADA Compliant
329D	A	Sr1 Sutton Circle	ADA Compliant
330H	A	WillowBrook & Greenbriar	ADA Compliant
331A	A	Sr1 & Hillcrest	ADA Compliant
331B	A	Sr1 & Hillcrest	ADA Compliant
331G	A	Sr1 & Hillcrest	ADA Compliant
331H	A	Sr1 & Hillcrest	ADA Compliant
332 A	A	Sr1 & Dustman Rd	ADA Compliant

332B	A	Sr1 & Dustman Rd	ADA Compliant
Ramps			
Bluffton	Grade	Location	
332F	A	Sr1 & Dustman Rd	ADA Compliant
332G	A	Sr1 & Dustman Rd	ADA Compliant
332H	A	Sr1 & Dustman Rd	ADA Compliant
333A	A	Sr1 & Lamar	ADA Compliant
333B	A	Sr1 & Lamar	ADA Compliant
333G	A	Sr1 & Lamar	ADA Compliant
333H	A	Sr1 & Lamar	ADA Compliant
334A	A	Sr1 & Capri Ct	ADA Compliant
334B	A	Sr1 & Capri Ct	ADA Compliant
334C	A	Sr1 & Capri Ct	ADA Compliant
334H	A	Sr1 & Capri Ct	ADA Compliant
335A	A	Sr1 & Charles Deam	ADA Compliant
335H	A	Sr1 & Charles Deam	ADA Compliant
336A	A	Greenfiels Ln & Granary	ADA Compliant
336B	A	Greenfield Ln & Granary	ADA Compliant
336G	A	Greenfield Ln & Granary	ADA Compliant
336H	A	Greenfield Ln & Granary	ADA Compliant
337A	A	Greenfield Ln & Farmington Dr	ADA Compliant
337B	A	Greenfield Ln & Farmington Dr	ADA Compliant
337C	A	Greenfield Ln & Farmington Dr	ADA Compliant
337D	A	Greenfield Ln & Farmington Dr	ADA Compliant
338A	A	Farmington Dr & Ellingham	ADA Compliant
338H	A	Farmington & Ellingham	ADA Compliant

Sidewalks			
Bluffton	Grade	Location	Description
1	B	South side of Division Rd from SR 1 to end	cross slope
2	C	East side of SR 1 from Division Rd to Wabash St	width and cross slope
3	A	East side of SR 1 from Wabash St to Perry St	*small rapair needed by water meter*
4	A	East side of SR 1 from Perry St to Market St	
5	A	East side of SR 1 from Market St to Walnut St	
6	B	East side of SR 1 from Walnut St to Washington St	width
7	A	East side of SR 1 from Washington St to Cherry St	
8	B	East side of SR 1 from Cherry St to Poplar St	cross slope
9	C	East side of SR 1 from Poplar St to South St	cross slope and level change
10	C	East side of SR 1 from South St to Riley St	cross slope and level change
11	C	East side of SR 1 from Riley St to Central Ave	cross slope and level change
12	C	East side of SR 1 from Central Ave to Wiley Ave	cross slope and level change
13	C	East side of SR 1 from Wiley Ave to Ohio St	cross slope and level change
14	C	East side of SR 1 from Ohio St to Arnold St	cross slope and level change
15	C	East side of SR 1 from Arnold St to Silver St	cross slope and level change
16	C	East side of SR 1 from Silver St to Townley St	cross slope and level change
17	C	East side of SR 1 from Townley St to Horton St	cross slope and level change
18	C	East side of SR 1 from Horton St to Spring St	cross slope and level change
19	C	West side of SR 1 from Spring St to Horton St	cross slope and level change
20	C	West side of SR 1 from Horton St to Townley St	cross slope and level change
21	C	West side of SR 1 from Townley St to Silver St	cross slope and level change
22	C	West side of SR 1 from Silver St to Arnold St	cross slope and level change
23	C	West side of SR 1 from Arnold St to Ohio St	cross slope and level change
24	C	West side of SR 1 from Ohio St to Wiley Ave	cross slope and level change
25	C	West side of SR 1 from Wiley Ave to Central Ave	cross slope and level change
26	A	West side of SR 1 from Central Ave to Riley St	
27	C	South side of Riley St from SR 1 to End of Sidewalk	cross slope and level change
28	C	West side of SR 1 from Riley St to South St	cross slope and level change
29	A	West side of SR 1 from South St to Poplar St	
30	C	West side of SR 1 from Poplar St to Cherry St	cross slope and level change
31	C	West side of SR 1 from Cherry St to Washington St	cross slope and level change
32	A	West side of SR 1 from Washington St to Walnut St	
33	A	West side of SR 1 from Walnut St to Market St	
34	B	West side of SR 1 from Market St to Perry St	cross slope
35	B	West side of SR 1 from Perry St to Wabash St	cross slope
36	C	West side of SR 1 from Wabash St to Water St	width and level change
37	B	West side of SR 1 from Water St to Division Rd	cross slope
38	B	South side of Water St from SR 1 to Johnson St	cross slope
39	B	East side of Johnson St from Water St to Wabash St	cross slope
40	B	East side of Johnson St from Wabash St to Perry St	cross slope
41	C	East side of Johnson St from Perry St to Market St	cross slope and level change
42	B	East side of Johnson St from Market St to Walnut St	cross slope
43	B	East side of Johnson St from Walnut St to Washington St	cross slope
44	B	East side of Johnson St from Washington St to Cherry St	cross slope
45	A	East side of Johnson St from Cherry St to Poplar St	
46	F	East side of Johnson St from Poplar St to South St	heaving

Shaded area indicates the sidewalk is within INDOT's right of way

Sidewalks			
Bluffton	Grade	Location	Description
47	D	East side of Johnson St from South St to Riley St	cross slope, level change, little heaving
48	F	East side of Johnson St from Riley St to Central Ave	heaving
49	C	East side of Johnson St from Central Ave to Wiley Ave	cross slope and level change
50	C	East side of Johnson St from Wiley Ave to Arnold St	cracked up and cross slope
51	C	East side of Johnson St from Arnold St to Silver St	cross slope and level change
52	B	East side of Johnson St from Silver St to Townley St	cross slope
53	B	East side of Johnson St from Townley St to Horton St	cross slope
54	B	West side of Johnson St from Townley St to Silver St	cross slope
55	C	West side of Johnson St from Silver St to Ohio St	cracked up and cross slope
56	D	West side of Johnson St from Ohio St to Wiley Ave	cross slope, level change, little heaving
57	D	West side of Johnson St from Wiley Ave to Central Ave	broken, width, cross slope
58	D	West side of Johnson St from Central Ave to Riley St	cross slope, level change, little heaving
59	C	West side of Johnson St from Riley St to South St	cross slope and level change
60	B	West side of Johnson St from South St to Poplar St	cross slope
61	A	West side of Johnson St from Poplar St to Cherry St	
62	B	West side of Johnson St from Cherry St to Washington St	cross slope
63	B	West side of Johnson St from Washington St to Walnut St	cross slope
64	B	West side of Johnson St from Walnut St to Market St	cross slope
65	B	West side of Johnson St from Market St to Perry St	cross slope
66	B	West side of Johnson St from Perry St to Wabash St	cross slope
67	D	West side of Johnson St from Wabash St to Water St	width, cross slope, level change
68	D	South side of Water St from Johnson St to Marion St	cross slope, level change, little heaving
69	B	East side of Marion St from Water St to Wabash St	cross slope
70	B	East side of Marion St from Wabash St to Perry St	cross slope
71	B	East side of Marion St from Perry St to Market St	cross slope
72	B	East side of Marion St from Market St to Walnut St	cross slope
73	B	East side of Marion St from Walnut St to Washington St	cross slope
74	B	East side of Marion St from Washington St to Cherry St	cross slope
75	A	East side of Marion St from Cherry St to Poplar St	
76	B	East side of Marion St from Poplar St to South St	cross slope
77	B	East side of Marion St from South St to Riley St	cross slope
78	C	East side of Marion St from Riley St to Central Ave	cross slope and level change
79	B	East side of Marion St from Central Ave to Wiley Ave	cross slope
80	F	East side of Marion St from Wiley Ave to Ohio St	cross slope, cracked, heaving
81	D	East side of Marion St from Ohio St to Silver St	width, cross slope, level change
82	D	East side of Marion St from Silver St to Townley St	cross slope, level change, little heaving
83	B	East side of Marion St from Townley St to Horton St	cross slope
84	NONE	West side of Marion St from Horton St to Townley St	
85	C	West side of Marion St from Townley St to Silver St	cross slope and level change
86	B	West side of Marion St from Silver St to Arnold St	cross slope
87	F	West side of Marion St from Arnold St to Wiley Ave	everything
88	D	West side of Marion St from Wiley Ave to Central Ave	cross slope, level change, little heaving
89	D	West side of Marion St from Central Ave to Riley St	cross slope, level change, little heaving
90	B	West side of Marion St from Riley St to South St	cross slope
91	B	West side of Marion St from South St to Poplar St	cross slope
92	B	West side of Marion St from Poplar St to Cherry St	cross slope
93	A	West side of Marion St from Cherry St to Washington St	

Sidewalks			
Bluffton	Grade	Location	Description
94	B	West side of Marion St from Washington St to Walnut St	cross slope
95	B	West side of Marion St from Walnut St to Market St	cross slope
96	A	West side of Marion St from Market St to Perry St	
97	B	West side of Marion St from Perry St to Wabash St	cross slope
98	F	West side of Marion St from Wabash St to Water St	everything
99	F	West side of Marion St from Water St to Miller St	everything
100	D	West side of Marion St from Miller St to Drummond St	cross slope, level change, little heaving
101	D	West side of Marion St from Drummond St to Lancaster St	cross slope, level change, little heaving
102	D	West side of Marion St from Lancaster St to End of Sidewalk	cross slope, level change, little heaving
103	F	North side of Lancaster St from Marion St to Williams St	everything
104	D	North side of Lancaster St from Williams St to Morgan St	width, cross slope, level change
105	F	South side of Lancaster St from Morgan St to Williams St	everything
106	F	South side of Lancaster St from Williams St to Marion St	everything
107	C	East side of Williams St from Lancaster St to Drummond St	cracked up and cross slope
108	C	East side of Williams St from Drummond St to Miller St	cracked up and cross slope
109	D	East side of Williams St from Miller St to Water St	cross slope, level change, little heaving
110	F	East side of Williams St from Water St to Wabash St	everything
111	D	East side of Williams St from Wabash St to Perry St	width, cross slope, level change
112	A	East side of Williams St from Perry St to Market St	
113	B	East side of Williams St from Market St to Walnut St	cross slope
114	C	East side of Williams St from Walnut St to Washington St	cross slope and level change
115	C	East side of Williams St from Washington St to Cherry St	cracked up and cross slope
116	B	East side of Williams St from Cherry St to South St	cross slope
117	NONE	East side of Williams St from Poplar St to South St	
118	B	East side of Williams St from South St to Central Ave	cross slope
119	NONE	East side of Williams St from Riley St to Central Ave	
120	B	East side of Williams St from Central Ave to Wiley Ave	cross slope
121	C	East side of Williams St from Wiley Ave to Ohio St	cracked up and cross slope
122	F	East side of Williams St from Ohio St to Arnold St	cross slope, heaving
123	C	East side of Williams St from Arnold St to Silver St	cross slope
124	F	East side of Williams St from Silver St to Townley St	cross slope
125	D	East side of Williams St from Townley St to Horton St	width, cross slope, level change
126	B	East side of Williams St from Horton St to Spring St	cross slope
127	C	West side of Williams St from Spring St to Horton St	cross slope and level change
128	C	West side of Williams St from Horton St to Townley St	width and cross slope
129	C	West side of Williams St from Townley St to Silver St	cross slope and level change
130	C	West side of Williams St from Silver St to Arnold St	cross slope and level change
131	F	West side of Williams St from Arnold St to Ohio St	cross slope
132	C	West side of Williams St from Ohio St to Wiley Ave	cross slope and level change

Sidewalks			
Bluffton	Grade	Location	Description
133	C	West side of Williams St from Wiley Ave to Central Ave	width and cross slope
134	D	West side of Williams St from Central Ave to South St	width, cross slope, level change
135	NONE	West side of Williams St from Riley St to South St	
136	B	West side of Williams St from South St to Cherry St	cross slope
137	NONE	West side of Williams St from Poplar St to Cherry St	
138	B	West side of Williams St from Cherry St to Washington St	cross slope
139	B	West side of Williams St from Washington St to Walnut St	cross slope
140	C	West side of Williams St from Walnut St to Market St	cross slope and level change
141	B	West side of Williams St from Market St to Perry St	cross slope
142	C	West side of Williams St from Perry St to Wabash St	cross slope and level change
143	C	West side of Williams St from Wabash St to Water St	width and cross slope
144	F	West side of Williams St from Water St to Miller St	everything
145	D	West side of Williams St from Miller St to Drummond St	cross slope, level change, little heaving
146	F	West side of Williams St from Drummond St to Lancaster St	everything
147	F	West side of Williams St from Lancaster St to End of Sidewalk	everything
148	F	East side of Morgan St from Lancaster St to Drummond St	everything
149	F	East side of Morgan St from Drummond St to Miller St	everything
150	C	East side of Morgan St from Miller St to Water St	cross slope and level change
151	C	East side of Morgan St from Water St to Wabash St	cross slope and level change
152	D	East side of Morgan St from Wabash St to Perry St	cross slope, level change, little heaving
153	F	East side of Morgan St from Perry St to Market St	everything
154	C	East side of Morgan St from Market St to Walnut St	width and cross slope
155	B	East side of Morgan St from Walnut St to Washington St	cross slope
156	D	East side of Morgan St from Washington St to Cherry St	width, cross slope, level change
157	C	East side of Morgan St from Cherry St to South St	width and cross slope
158	NONE	East side of Morgan St from Poplar St to South St	
159	D	East side of Morgan St from South St to Central Ave	width, cross slope, level change
160	NONE	East side of Morgan St from Riley St to Central Ave	
161	D	East side of Morgan St from Central Ave to Wiley Ave	width, cross slope, level change
162	B	East side of Morgan St from Wiley Ave to Ohio St	cross slope
163	D	East side of Morgan St from Ohio St to Arnold St	width, cross slope, level change
164	D	North side of Arnold St from Morgan to End of Sidewalk	width, cross slope, level change
165	C	East side of Morgan St from Arnold St to Silver St	cross slope and level change
166	D	East side of Morgan St from Silver St to Townley St	width, cross slope, level change
167	D	East side of Morgan St from Townley St to Horton St	some heaving
168	D	East side of Morgan St from Horton St to Spring St	width, cross slope, level change
169	F	West side of Morgan St from Spring St to Horton St	everything
170	C	West side of Morgan St from Horton St to Townley St	cross slope and level change
171	D	West side of Morgan St from Townley St to Silver St	width, cross slope, level change
172	C	West side of Morgan St from Silver St to Arnold St	cross slope and level change
173	F	West side of Morgan St from Arnold St to Ohio St	everything

Sidewalks			
Bluffton	Grade	Location	Description
174	F	West side of Morgan St from Ohio St to Wiley Ave	everything
175	F	West side of Morgan St from Wiley Ave to Central Ave	everything
176	D	West side of Morgan St from Central Ave to South St	width, cross slope, level change
177	NONE	West side of Morgan St from Riley St to South St	
178	C	West side of Morgan St from South St to Cherry St	width and cross slope
179	NONE	West side of Morgan St from Poplar St to Cherry St	
180	C	West side of Morgan St from Cherry St to Washington St	width and cross slope
181	C	West side of Morgan St from Washington St to Walnut St	width and level change
182	B	West side of Morgan St from Walnut St to Market St	cross slope
183	D	West side of Morgan St from Market St to Perry St	width, cross slope, level change
184	D	West side of Morgan St from Perry St to Wabash St	width, cross slope, level change
185	F	West side of Morgan St from Wabash St to Water St	everything
186	F	West side of Morgan St from Water St to Miller St	everything
187	C	West side of Morgan St from Miller St to Drummond St	width and cross slope
188	D	West side of Morgan St from Drummond St to Lancaster St	cross slope, level change, little heaving
189	C	East side of Oak St from Drummond St to Miller St	width and cross slope
190	C	East side of Oak St from Miller St to Water St	width and cross slope
191	C	East side of Oak St from Water St to Wabash St	width and cross slope
192	B	East side of Oak St from Wabash St to Perry St	cross slope
193	B	East side of Oak St from Perry St to Market St	cross slope
194	D	East side of Oak St from Market St to Walnut St	cross slope, level change, little heaving
195	F	East side of Oak St from Walnut St to Washington St	everything
196	C	East side of Oak St from Washington St to Cherry St	cross slope and level change
197	D	East side of Oak St from Cherry St to South St	width, cross slope, level change
198	NONE	East side of Oak St from Poplar St to South St	
199	D	East side of Oak St from South St to Central Ave	width, cross slope, level change
200	NONE	East side of Oak St from Riley St to Central Ave	
201	C	East side of Oak St from Central Ave to Wiley Ave	broken and cross slope
202	C	East side of Oak St from Wiley Ave to Ohio St	cross slope and level change
203	D	East side of Oak St from Ohio St to Arnold St	cross slope, level change, little heaving
204	C	East side of Oak St from Arnold St to Silver St	cross slope and level change
205	B	East side of Oak St from Silver St to Townley St	cross slope
206	C	East side of Oak St from Townley St to Horton St	cross slope and missing
207	B	East side of Oak St from Horton St to Spring St	cross slope
208	C	West side of Oak St from Spring St to Horton St	cross slope and level change
209	D	West side of Oak St from Horton St to Townley St	width, cross slope, level change
210	C	West side of Oak St from Townley St to Silver St	cross slope and level change
211	A	West side of Oak St from Silver St to Arnold St	
212	D	West side of Oak St from Arnold St to Ohio St	width, cross slope, level change
213	D	West side of Oak St from Ohio St to Wiley Ave	width, cross slope, level change
214	D	West side of Oak St from Wiley Ave to Central Ave	width, cross slope, level change
215	B	West side of Oak St from Central Ave to South St	cross slope
216	NONE	West side of Oak St from Riley St to South St	
217	C	West side of Oak St from South St to Cherry St	cross slope and level change
218	NONE	West side of Oak St from Poplar St to Cherry St	
219	D	West side of Oak St from Cherry St to Washington St	width, cross slope, level change

Sidewalks			
Bluffton	Grade	Location	Description
220	C	West side of Oak St from Washington St to Walnut St	cross slope and level change
221	F	West side of Oak St from Walnut St to Market St	everything
222	F	West side of Oak St from Market St to Perry St	everything
223	B	West side of Oak St from Perry St to Wabash St	cross slope
224	B	West side of Oak St from Wabash St to Water St	cross slope
225	NONE	West side of Oak St from Water St to Miller St	
226	NONE	West side of Oak St from Miller St to Drummond St	
227	B	North side of Lancaster St from Oak St to Union St	cross slope
228	C	East side of Union St from Lancaster St to Wabash St	cross slope and level change
229	C	East side of Union St from Wabash St to Market St	broken and level change
230	F	East side of Union St from Market St to Washington St	broken, missing, covered
231	F	East side of Union St from Washington St to Cherry St	broken, missing, covered
232	F	East side of Union St from Cherry St to South St	broken, missing, covered
233	F	West side of Union St from South St to Cherry St	broken, missing, covered
234	F	West side of Union St from Cherry St to Washington St	broken, missing, covered
235	F	West side of Union St from Washington St to Market St	broken, missing, covered
236	B	West side of Union St from Market St to Wabash St	cross slope
237	F	West side of Union St from Wabash St to Lancaster St	broken, missing, covered
238	F	North side of Lancaster St from Union St to Baldwin St	broken, grass covered, missing sections
239	F	East side of Baldwin St from Lancaster St to Wabash St	width, heaving
240	C	East side of Baldwin St from Wabash St to Market St	width and cross slope
241	C	East side of Baldwin St from Market St to Washington St	width and cross slope
242	D	East side of Baldwin St from Washington St to Cherry St	width, cross slope, level change
243	F	East side of Baldwin St from Cherry St to South St	heaving
244	D	East side of Baldwin St from South St to Central Ave	width, cross slope, level change
245	NONE	East side of Baldwin St from Central Ave to Wiley Ave	
246	NONE	West side of Baldwin St from Wiley Ave to Central Ave	
247	D	West side of Baldwin St from Central Ave to South St	width, cross slope, level change
248	D	West side of Baldwin St from South St to Cherry St	width, cross slope, level change
249	D	West side of Baldwin St from Cherry St to Washington St	width, cross slope, level change
250	C	West side of Baldwin St from Washington St to Market St	width and cross slope
251	C	West side of Baldwin St from Market St to Wabash St	width and cross slope
252	C	West side of Baldwin St from Wabash St to Lancaster St	width and cross slope
253	D	East side of Bond St from Wabash St to Lancaster St	width, cross slope, level change
254	C	East side of Bond St from Market St to Wabash St	width and cross slope
255	C	East side of Bond St from Washington St to Market St	width and cross slope
256	C	East side of Bond St from Washington St to Cherry St	width and cross slope
257	B	East side of Bond St from Cherry St to South St	cross slope
258	F	West side of Bond St from South St to Cherry St	heaving
259	C	West side of Bond St from Cherry St to Washington St	width and cross slope
260	C	West side of Bond St from Washington St to Market St	cross slope and level change
261	NONE	West side of Bond St from Market St to Wabash St	
262	NONE	West side of Bond St from Wabash St to Lancaster St	

Sidewalks			
Bluffton	Grade	Location	Description
263	C	East side of Jersey St from Washington St to Cherry St	cross slope and level change
264	C	East side of Jersey St from Cherry St to South St	cross slope and level change
265	NONE	East side of Jersey St from Poplar St to South St	broken and level change
266	C	East side of Jersey St from South St to Wiley Ave	cross slope and level change
267	C	East side of Jersey St from Wiley Ave to Ohio St	cross slope and level change
268	B	East side of Jersey St from Ohio St to Arnold St	cross slope
269	B	South side of Arnold St from Jersey St to End of Sidewalk	cross slope
270	C	East side of Jersey St from Arnold St to Silver St	cross slope and level change
271	D	East side of Jersey St from Silver St to Townley St	cross slope, level change, little heaving
272	C	East side of Jersey St from Townley St to Horton St	cross slope and level change
273	B	East side of Jersey St from Horton St to Spring St	cross slope
274	C	West side of Jersey St from Spring St to Horton St	cross slope and level change
275	C	West side of Jersey St from Horton St to Townley St	cross slope and level change
276	B	West side of Jersey St from Townley St to Silver St	cross slope
277	B	West side of Jersey St from Silver St to Arnold St	cross slope
278	F	West side of Jersey St from Arnold St to Ohio St	heaving
279	D	West side of Jersey St from Ohio St to Wiley Ave	cross slope, level change, little heaving
280	C	West side of Jersey St from Wiley Ave to South St	cross slope and level change
281	D	West side of Jersey St from South St to Cherry St	width, cross slope, level change
282	NONE	West side of Jersey St from Poplar St to Cherry St	width, cross slope, level change
283	C	West side of Jersey St from Cherry St to Washington St	cross slope and level change
284	D	East side of Indiana St from South St to Wiley Ave	cross slope, level change, little heaving
285	F	West side of Bond St from Wiley Ave to Central Ave	heaving
286	F	West side of Bond St from Central Ave to South St	heaving
287	B	East side of Walmer Ave from Washington St to Cherry St	cross slope
288	C	West side of Walmer Ave from Washington St to Cherry St	cross slope and level change
289	B	East side of Walmer Ave from Cherry St to South St	cross slope
290	C	East side of Dougherty St from Central Ave to Wiley Ave	cross slope and level change
291	F	East side of Dougherty St from Wiley Ave to Jefferson St	heaving
292	F	West side of Dougherty St from Wiley Ave to Jefferson St	heaving
293	B	West side of Dougherty St from Central Ave to Wiley Ave	cross slope
294	F	East side of Beth Ave from Central Ave to South St	heaving, broken, cross slope
295	C	West side of Beth Ave from Washington St to Cherry St	cross slope and level change
296	D	West side of Beth Ave from Cherry St to South St	width, cross slope, level change
297	D	West side of Beth Ave from South St to Central Ave	width, cross slope, level change
298	C	West side of Beth Ave from Central Ave to Wiley Ave	width and cross slope
299	D	West side of Beth Ave from Wiley Ave to Jefferson St	width, cross slope, level change
300	F	East side of Beth Ave from Jefferson St to Wiley Ave	heaving
301	D	West side of Clark St from Ohio St to Indiana St	cross slope, level change, little heaving
302	B	West side of Clark St from Silver St to Ethel St	cross slope
303	B	West side of Clark St from Ethel St to Kathryn Dr	cross slope
304	NONE	West side of Clark St from Dorothy Dr to Kathryn Dr	width, cross slope, level change

Sidewalks			
Bluffton	Grade	Location	Description
305	F	West side of Clark St from Kathryn Dr to End of Sidewalk	heaving
306	F	North side of Miller St from Marion St to Williams St	broken and heaving
307	F	North side of Miller St from Williams St to Morgan St	broken and heaving
308	F	North side of Miller St from Morgan St to Oak St	broken and heaving
309	F	South side of Miller St from Oak St to Morgan St	broken and heaving
310	F	South side of Miller St from Morgan St to Williams St	broken and heaving
311	B	South side of Miller St from Williams St to Marion St	width
312	C	North side of Wabash St form SR 1 to Johnson St	cross slope and level change
313	C	North side of Wabash St form Johnson St to Marion St	cross slope and level change
314	C	North side of Wabash St from Marion St to Williams St	width and cross slope
315	D	North side of Wabash St from Williams St to Morgan St	width, cross slope, level change
316	C	North side of Wabash St from Morgan St to Oak St	width and cross slope
317	C	North side of Wabash St from Oak St to Indiana St	width and cross slope
318	C	North side of Wabash St from Indiana St to Union St	cross slope and level change
319	D	North side of Wabash St from Union St to Baldwin St	width, cross slope, level change
320	B	North side of Wabash St from Baldwin St to Bond St	cross slope
321	B	South side of Wabash St from Bond St to Baldwin St	level change
322	C	South side of Wabash St from Baldwin St to Union St	width and cross slope
323	D	South side of Wabash St from Union St to Indiana St	width, cross slope, level change
324	D	South side of Wabash St from Indiana St to Oak St	width, cross slope, level change
325	C	South side of Wabash St from Oak St to Morgan St	width and cross slope
326	C	South side of Wabash St from Morgan St to Williams St	width and cross slope
327	C	South side of Wabash St form Williams St to Marion St	width and cross slope
328	B	South side of Wabash St form Marion St to Johnson St	cross slope
329	B	South side of Wabash St form Johnson St to SR 1	cross slope
330	D	North side of Perry St form SR 1 to Johnson St	width, cross slope, level change
331	B	North side of Perry St form Johnson St to Marion St	cross slope
332	B	South side of Perry St form Marion St to Johnson St	cross slope
333	C	South side of Perry St form Johnson St to SR 1	cross slope and level change
334	B	North side of Market St form SR 1 to Johnson St	cross slope
335	B	North side of Market St form Johnson St to Marion St	cross slope
336	B	North side of Market St from Marion St to Williams St	cross slope
337	D	North side of Market St from Williams St to Morgan St	cross slope, level change, little heaving
338	D	North side of Market St from Morgan St to Oak St	cross slope, level change, little heaving
339	C	North side of Market St from Oak St to Indiana St	cross slope and level change
340	C	North side of Market St from Indiana St to Union St	cross slope and level change
341	C	North side of Market St from Union St to Baldwin St	cross slope and level change
342	F	North side of Market St from Baldwin St to Bond St	heaving
343	D	South side of Market St from End of Sidewalk to Bond St	width, cross slope, level change
344	C	South side of Market St from Bond St to Baldwin St	cross slope and level change
345	B	South side of Market St from Baldwin St to Union St	cross slope
346	B	South side of Market St from Union St to Indiana St	cross slope
347	D	South side of Market St from Indiana St to Oak St	cross slope, level change, little heaving
348	D	South side of Market St from Oak St to Morgan St	width, cross slope, heaving
349	D	South side of Market St from Morgan St to Williams St	cross slope, level change, little heaving
350	B	South side of Market St form Williams St to Marion St	cross slope
351	B	South side of Market St form Marion St to Johnson St	cross slope
352	A	South side of Market St form Johnson St to SR 1	

Sidewalks			
Bluffton	Grade	Location	Description
353	B	North side of Washington St form SR 1 to Johnson St	cross slope
354	B	North side of Washington St form Johnson St to Marion St	cross slope
355	B	North side of Washington St from Marion St to Williams St	cross slope
356	B	North side of Washington St from Williams St to Morgan St	cross slope
357	C	North side of Washington St from Morgan St to Oak St	cross slope and level change
358	B	North side of Washington St from Union St to Baldwin St	cross slope
359	C	North side of Washington St from Baldwin St to Bond St	cross slope and level change
360	B	North side of Washington St from Bond St to Walmer Ave	cross slope
361	B	North side of Washington St from Walmer Ave to Beth Ave	cross slope
362	C	South side of Washington St from Beth Ave to Walmer Ave	cross slope and level change
363	B	South side of Washington St from Walmer Ave to Bond St	level change
364	B	South side of Washington St from Bond St to Baldwin St	cross slope
365	C	South side of Washington St from Baldwin St to Union St	cross slope and level change
366	A	South side of Washington St from Union St to Jersey St	
367	A	South side of Washington St from Jersey St to Oak St	trim bushes
368	C	South side of Washington St from Oak St to Morgan St	cross slope and level change
369	B	South side of Washington St from Morgan St to Williams St	cross slope
370	B	South side of Washington St form Williams St to Marion St	cross slope
371	A	South side of Washington St form Marion St to Johnson St	
372	B	South side of Washington St form Johnson St to SR 1	cross slope
373	B	North side of Cherry St form SR 1 to Johnson St	cross slope
374	B	North side of Cherry St form Johnson St to Marion St	cross slope
375	B	North side of Cherry St from Marion St to Williams St	cross slope
376	B	North side of Cherry St from Williams St to Morgan St	cross slope
377	C	North side of Cherry St from Morgan St to Oak St	cross slope and little heaving
378	D	North side of Cherry St from Oak St to Jersey St	cross slope, level change, little heaving
379	C	North side of Cherry St from Jersey St to Union St	cross slope and level change
380	B	North side of Cherry St from Union St to Baldwin St	cross slope
381	C	North side of Cherry St from Baldwin St to Bond St	cross slope and level change
382	B	North side of Cherry St from Bond St to Walmer Ave	cross slope
383	C	North side of Cherry St from Walmer Ave to Beth Ave	cross slope and level change
384	F	South side of Cherry St from Beth Ave to Walmer Ave	grass covered and missing
385	B	South side of Cherry St from Walmer Ave to Bond St	cross slope
386	B	South side of Cherry St from Bond St to Baldwin St	cross slope
387	B	South side of Cherry St from Baldwin St to Union St	cross slope
388	F	South side of Cherry St from Union St to Jersey St	cross slope, level change, little heaving
389	C	South side of Cherry St from Jersey St to Oak St	cross slope and level change

Sidewalks			
Bluffton	Grade	Location	Description
390	C	South side of Cherry St from Oak St to Morgan St	cross slope and broken up
391	C	South side of Cherry St from Morgan St to Williams St	cross slope and level change
392	B	South side of Cherry St form Williams St to Marion St	cross slope
393	B	South side of Cherry St form Marion St to Johnson St	cross slope
394	B	South side of Cherry St form Johnson St to SR 1	cross slope
395	C	North side of South St form SR 1 to Johnson St	cross slope and level change
396	C	North side of South St form Johnson St to Marion St	cross slope and level change
397	B	North side of South St from Marion St to Williams St	cross slope
398	F	North side of South St from Williams St to Morgan St	everything
399	B	North side of South St from Morgan St to Oak St	cross slope
400	B	North side of South St from Oak St to Jersey St	cross slope
401	F	North side of South St from Jersey St to Union St	everything
402	A	North side of South St from Union St to Baldwin St	
403	B	North side of South St from Baldwin St to Bond St	couple broken
404	F	North side of South St from Bond St to Walmer Ave	everything
405	D	North side of South St from Walmer Ave to Beth Ave	cross slope, level change, little heaving
406	F	South side of South St from Beth Ave to Walmer Ave	heaving
407	F	South side of South St from Walmer Ave to Bond St	heaving
408	B	South side of South St from Bond St to Baldwin St	cross slope
409	C	South side of South St from Baldwin St to Union St	cross slope and level change
410	B	South side of South St from Union St to Jersey St	cross slope
411	B	South side of South St from Jersey St to Oak St	cross slope
412	B	South side of South St from Oak St to Morgan St	cross slope
413	C	South side of South St from Morgan St to Williams St	cross slope and level change
414	C	South side of South St form Williams St to Marion St	cross slope and level change
415	C	South side of South St form Marion St to Johnson St	cross slope and level change
416	C	South side of South St form Johnson St to SR 1	cross slope and level change
417	C	North side of Central Ave form SR 1 to Johnson St	cross slope and level change
418	B	North side of Central Ave form Johnson St to Marion St	cross slope
419	B	North side of Central Ave from Marion St to Williams St	level change
420	C	North side of Central Ave from Williams St to Morgan St	cross slope and level change
421	C	North side of Central Ave from Morgan St to Oak St	cross slope and level change
422	C	North side of Central Ave from Baldwin St to Bond St	width and cross slope
423	F	North side of Central Ave from Bond St to Walmer Ave	heaving
424	C	North side of Central Ave from Walmer Ave to Beth Ave	width and cross slope
425	D	South side of Central Ave from Beth Ave to Walmer Ave	width, cross slope, level change
426	B	South side of Central Ave from Walmer Ave to Bond St	cross slope
427	D	South side of Central Ave from Bond St to Baldwin St	width, cross slope, level change
428	D	South side of Central Ave from Oak St to Morgan St	broken, cross slope, level change
429	C	South side of Central Ave from Morgan St to Williams St	cross slope and level change
430	C	South side of Central Ave form Williams St to Marion St	cross slope and level change

Sidewalks			
Bluffton	Grade	Location	Description
431	B	South side of Central Ave form Marion St to Johnson St	cross slope
432	C	South side of Central Ave form Johnson St to SR 1	cross slope and level change
433	C	North side of Wiley Ave form SR 1 to Johnson St	cross slope and level change
434	F	North side of Wiley Ave form Johnson St to Marion St	heaving
435	C	North side of Wiley Ave from Marion St to Williams St	cross slope and level change
436	C	North side of Wiley Ave from Williams St to Morgan St	cross slope and level change
437	F	North side of Wiley Ave from Morgan St to Oak St	heaving
438	D	North side of Wiley Ave from Oak St to Jersey St	medium heaving
439	C	North side of Wiley Ave from Jersey St to Indiana St	width and cross slope
440	B	North side of Wiley Ave from Indiana St to Baldwin St	cross slope
441	F	North side of Wiley Ave from Baldwin St to Bond St	cross slope, level change, little heaving
442	D	North side of Wiley Ave from Bond St to Dougherty St	width, cross slope, level change
443	F	North side of Wiley Ave from Dougherty St to Beth Ave	heaving
444	D	South side of Wiley Ave from Beth Ave to Dougherty St	width, cross slope, level change
445	D	South side of Wiley Ave from Dougherty St to Bond St	width, cross slope, level change
446	D	South side of Wiley Ave from Bond St to Baldwin St	width, cross slope, level change
447	D	South side of Wiley Ave from Baldwin St to Indiana St	width, cross slope, level change
448	F	South side of Wiley Ave from Indiana St to Jersey St	everything
449	C	South side of Wiley Ave from Jersey St to Oak St	cross slope and level change
450	C	South side of Wiley Ave from Oak St to Morgan St	cross slope and level change
451	C	South side of Wiley Ave from Morgan St to Williams St	cross slope and level change
452	C	South side of Wiley Ave form Williams St to Marion St	cross slope and level change
453	C	South side of Wiley Ave form Marion St to Johnson St	cross slope and level change
454	B	South side of Wiley Ave form Johnson St to SR 1	cross slope
455	B	North side of Ohio St from Williams St to Morgan St	cross slope
456	A	North side of Ohio St from Morgan St to Oak St	
457	A	North side of Ohio St from Oak St to Jersey St	
458	B	South side of Ohio St from Jersey St to Oak St	cross slope
459	A	South side of Ohio St from Oak St to Morgan St	
460	B	South side of Ohio St from Morgan St to Williams St	cross slope
461	C	North side of Silver St form SR 1 to Johnson St	cross slope and level change
462	B	North side of Silver St form Johnson St to Marion St	cross slope
463	NONE	North side of Silver St from Marion St to Williams St	
464	NONE	North side of Silver St from Williams St to Morgan St	
465	NONE	North side of Silver St from Morgan St to Oak St	
466	B	North side of Silver St from Oak St to Jersey St	cross slope
467	C	North side of Silver St from Jersey St to Indiana St	cross slope and level change
468	A	North side of Silver St from Indiana St to End of Sidewalk	
469	B	South side of Silver St from Reid St to Grove St	cross slope
470	B	South side of Silver St from Grove St to Indiana St	cross slope
471	C	South side of Silver St from Indiana St to Jersey St	cross slope and level change
472	B	South side of Silver St from Jersey St to Oak St	cross slope
473	B	South side of Silver St from Oak St to Morgan St	cross slope
474	B	South side of Silver St from Morgan St to Williams St	cross slope
475	B	South side of Silver St form Williams St to Marion St	cross slope
476	C	South side of Silver St form Marion St to Johnson St	cross slope and level change
477	B	South side of Silver St form Johnson St to SR 1	width

Sidewalks			
Bluffton	Grade	Location	Description
478	F	North side of Townley St form SR 1 to Johnson St	heaving
479	NONE	North side of Townley St form Johnson St to Marion St	
480	A	North side of Townley St from Marion St to Williams St	
481	C	North side of Townley St from Williams St to Morgan St	cross slope and level change
482	NONE	North side of Townley St from Morgan St to Oak St	
483	NONE	North side of Townley St from Oak St to Jersey St	
484	NONE	South side of Townley St from Jersey St to Oak St	
485	C	South side of Townley St from Oak St to Morgan St	cross slope and level change
486	C	South side of Townley St from Morgan St to Williams St	width and cross slope
487	A	South side of Townley St form Williams St to Marion St	
488	C	South side of Townley St form Marion St to Johnson St	cross slope, level change
489	F	South side of Townley St form Johnson St to SR 1	cross slope and level change
490	A	North side of Horton St from SR 1 to End of Sidewalk	heaving
491	B	North side of Horton St from Marion St to Williams St	cross slope
492	B	North side of Horton St from Williams St to Morgan St	cross slope
493	B	South side of Horton St from Morgan St to Williams St	cross slope
494	C	South side of Horton St from Williams St to Marion St	cross slope and level change
495	B	South side of Horton St from Johnson St to SR 1	cross slope
496	C	North side of Spring St from SR 1 to Johnson St	cross slope and level change
497	B	North side of Spring St from Johnson St to Williams St	cross slope
498	C	North side of Spring St from Williams St to Morgan St	cross slope and level change
499	C	North side of Spring St from Morgan St to Oak St	cross slope and level change
500	B	North side of Spring St from Oak St to Jersey St	cross slope
501	B	North side of Spring St from Jersey St to Clark St	cross slope
502	B	East side of Road leading to the Pool	cross slope
503	NONE	North side of Harvest Rd	
504	C	North side of Elm St from SR 1 to Johnson St	width and cross slope
505	NONE	North side of Elm St from Johnson St to Marion St	
506	NONE	South side of Elm St from Marion St to Johnson St	
507	C	South side of Elm St from Johnson St to SR 1	width and cross slope
508	C	North side of Wabash St from SR 1 to Scott St	cross slope and level change
509	C	North side of Wabash St from Scott St to End of Sidewalk	cross slope and level change
510	B	South side of Wabash St from End of sidewalk to Scott St	cross slope
511	C	South side of Wabash St from Scott St to SR 1	cross slope and level change
512	C	North side of Perry St from SR 1 to Scott St	cross slope and level change
513	C	South side of Perry St form Scott St to SR 1	cross slope and level change
514	B	North side of Market St from SR 1 to Scott St	cross slope
515	C	North side of Market St from Scott St to Bennett St	cross slope and level change
516	C	North side of Market St from Bennett St to End of Sidewalk	cross slope and level change
517	C	South side of Market St from End of Sidewalk to Bennett St	cross slope and level change
518	B	South side of Market St from Bennett St to Scott St	cross slope
519	B	South side of Market St from Scott St to SR 1	cross slope
520	C	North side of Walnut St from SR 1 to Scott St	cross slope and level change
521	A	North side of Walnut St from Scott St to Bennett St	
522	NONE	North side of Walnut St from Bennett St to Mulberry St	
523	NONE	North side of Walnut St from Mulberry St to Liberty St	

Sidewalks			
Bluffton	Grade	Location	Description
524	NONE	South side of Walnut St from Liberty St to Mulberry St	
525	NONE	South side of Walnut St from Mulberry St to Bennett St	
526	NONE	South side of Walnut St from Bennett St to Scott St	
527	A	South side of Walnut St from Scott St to SR 1	
528	B	North side of Washington St from SR 1 to Scott St	cross slope
529	C	North side of Washington St from Scott St to Bennett St	cross slope and level change
530	F	North side of Washington St from Bennett St to Mulberry St	everything
531	F	North side of Washington St from Mulberry St to Liberty St	everything
532	C	North side of Washington St from Liberty St to Wayne St	cross slope and level change
533	NONE	North side of Washington St from Wayne St to River Rd	
534	NONE	South side of Washington St from River Rd to Wayne St	
535	A	South side of Washington St from Wayne St to Liberty St	
536	A	South side of Washington St from Liberty St to Mulberry St	
537	A	South side of Washington St from Mulberry St to Bennett St	
538	C	South side of Washington St from Bennett St to Scott St	cross slope and level change
539	B	South side of Washington St from Scott St to SR 1	cross slope
540	B	North side of Elm St from SR 1 to Scott St	cross slope
541	B	South side of Elm St from Scott St to SR 1	cross slope
542	B	North side of Cherry St from SR 1 to Scott St	cross slope
543	B	North side of Cherry St from Scott St to Bennett St	cross slope
544	F	North side of Cherry St from Bennett St to Mulberry St	heaving
545	D	North side of Cherry St from Mulberry St to Liberty St	cross slope, level change, little heaving
546	A	North side of Cherry St from Liberty St to Wayne St	
547	D	South side of Cherry St from Wayne St to Liberty St	cross slope, level change, little heaving
548	D	South side of Cherry St from Liberty St to Mulberry St	cross slope, level change, little heaving
549	B	South side of Cherry St from Mulberry St to Bennett St	cross slope
550	C	South side of Cherry St from Bennett St to Scott St	cross slope and level change
551	B	South side of Cherry St from Scott St to SR 1	cross slope
552	A	North side of Poplar St from SR 1 to Scott St	
553	B	North side of South St from SR 1 to Scott St	cross slope
554	C	North side of South St from Scott St to Bennett St	cross slope and level change
555	D	North side of South St from Bennett St to Mulberry St	cross slope, level change, little heaving
556	C	North side of South St from Mulberry St to Liberty St	cross slope and level change
557	C	North side of South St from Liberty St to Wayne St	cross slope and level change
558	B	South side of South St from Wayne St to Liberty St	cross slope
559	C	South side of South St from Liberty St to Mulberry St	cross slope and level change
560	B	South side of South St from Mulberry St to Bennett St	cross slope
561	B	South side of South St from Bennett St to Scott St	cross slope
562	C	South side of South St from Scott St to SR 1	cross slope and level change
563	B	North side of Central Ave from SR 1 to Scott St	cross slope
564	C	North side of Central Ave from Scott St to Bennett St	cross slope and level change

Sidewalks			
Bluffton	Grade	Location	Description
565	C	North side of Central Ave from Bennett St to Mulberry St	cross slope and level change
566	D	North side of Central Ave from Mulberry St to Liberty St	cross slope, level change, little heaving
567	F	North side of Central Ave from Liberty St to Wayne St	everything
568	B	South side of Central Ave from Wayne St to Liberty St	cross slope
569	D	South side of Central Ave from Liberty St to Mulberry St	cross slope, level change, little heaving
570	C	South side of Central Ave from Mulberry St to Bennett St	cross slope
571	C	South side of Central Ave from Bennett St to Scott St	cross slope
572	B	South side of Central Ave from Scott St to SR 1	cross slope
573	NONE	West side of Wayne St from Central Ave to End of Sidewalk	
574	B	North side of Wiley Ave from SR 1 to Scott St	cross slope
575	D	North side of Wiley Ave from Scott St to Bennett St	cross slope, level change, little heaving
576	D	North side of Wiley Ave from Bennett St to Mulberry St	cross slope, level change, little heaving
577	C	North side of Wiley Ave from Mulberry St to Liberty St	cross slope and level change
578	B	North side of Wiley Ave from Liberty St to Wayne St	cross slope
579	C	South side of Wiley Ave from Wayne St to Liberty St	cross slope and level change
580	C	South side of Wiley Ave from Liberty St to Mulberry St	cross slope and level change
581	C	South side of Wiley Ave from Mulberry St to Bennett St	cross slope and level change
582	B	South side of Wiley Ave from Bennett St to Scott St	cross slope
583	C	South side of Wiley Ave from Scott St to SR 1	cross slope and level change
584	B	North side of Ohio St from SR 1 to Scott St	cross slope
585	B	North side of Ohio St from Scott St to Bennett St	cross slope
586	B	North side of Ohio St from Bennett St to Mulberry St	cross slope
587	C	North side of Ohio St from Mulberry St to Liberty St	cross slope and level change
588	D	North side of Ohio St from Liberty St to Wayne St	cross slope, level change, little heaving
589	C	South side of Ohio St from Wayne St to Liberty St	cross slope and level change
590	C	South side of Ohio St from Liberty St to Mulberry St	cross slope and level change
591	A	South side of Ohio St from Mulberry St to Bennett St	
592	D	South side of Ohio St from Bennett St to Scott St	cross slope, level change, little heaving
593	B	South side of Ohio St from Scott St to SR 1	cross slope
594	B	North side of Arnold St from SR 1 to Scott St	cross slope
595	C	North side of Arnold St from Scott St to Bennett St	cross slope and level change
596	A	North side of Arnold St from Bennett St to Mulberry St	
597	D	North side of Arnold St from Mulberry St to Liberty St	cross slope, level change, little heaving
598	D	North side of Arnold St from Liberty St to Wayne St	cross slope, level change, little heaving
599	D	South side of Arnold St from Wayne St to Liberty St	cross slope, level change, little heaving
600	D	South side of Arnold St from Liberty St to Mulberry St	cross slope, level change, little heaving
601	C	South side of Arnold St from Mulberry St to Bennett St	cross slope and level change
602	B	South side of Arnold St from Bennett St to Scott St	cross slope
603	D	South side of Arnold St from Scott St to SR 1	cross slope, level change, little heaving
604	C	North side of Silver St from SR 1 to Scott St	cross slope and level change
605	C	North side of Silver St from Scott St to Bennett St	cross slope and level change
606	D	North side of Silver St from Bennett St to Mulberry St	cross slope, level change, little heaving
607	C	North side of Silver St from Mulberry St to Liberty St	cross slope and level change

Sidewalks			
Bluffton	Grade	Location	Description
608	C	North side of Silver St from Liberty St to Wayne St	cross slope and level change
609	D	South side of Silver St from Wayne St to Liberty St	cross slope, level change, little heaving
610	D	South side of Silver St from Liberty St to Mulberry St	cross slope, level change, little heaving
611	C	South side of Silver St from Mulberry St to Bennett St	cross slope and level change
612	C	South side of Silver St from Bennett St to Scott St	cross slope and level change
613	C	South side of Silver St from Scott St to SR 1	cross slope and level change
614	B	North side of Townley St from SR 1 to Scott St	cross slope
615	D	North side of Townley St from Scott St to Bennett St	cross slope, level change, little heaving
616	D	North side of Townley St from Bennett St to Mulberry St	cross slope, level change, little heaving
617	B	North side of Townley St from Mulberry St to Liberty St	cross slope
618	B	North side of Townley St from Liberty St to Wayne St	cross slope
619	B	South side of Townley St from Wayne St to Liberty St	cross slope
620	D	South side of Townley St from Liberty St to Mulberry St	cross slope, level change, little heaving
621	B	South side of Townley St from Mulberry St to Bennett St	cross slope
622	D	South side of Townley St from Bennett St to Scott St	cross slope, level change, little heaving
623	D	South side of Townley St from Scott St to SR 1	cross slope, level change, little heaving
624	D	North side of Horton St from SR 1 to Scott St	cross slope, level change, little heaving
625	B	North side of Horton St from Scott St to Bennett St	cross slope
626	B	North side of Horton St from Bennett St to Mulberry St	cross slope
627	D	North side of Horton St from Mulberry St to Liberty St	cross slope, level change, little heaving
628	C	North side of Horton St from Liberty St to Wayne St	cross slope and level change
629	C	South side of Horton St from Wayne St to Liberty St	cross slope and level change
630	D	South side of Horton St from Liberty St to Mulberry St	cross slope, level change, little heaving
631	C	South side of Horton St from Mulberry St to Bennett St	cross slope and level change
632	C	South side of Horton St from Bennett St to Scott St	cross slope and level change
633	C	South side of Horton St from Scott St to SR 1	cross slope and level change
634	B	North side of Spring St from SR 1 to Scott St	cross slope
635	B	North side of Spring St from Scott St to Bennett St	cross slope
636	B	North side of Spring St from Bennett St to Mulberry St	cross slope
637	B	North side of Spring St from Mulberry St to Liberty St	cross slope
638	B	North side of Spring St from Liberty St to Wayne St	cross slope
639	NONE	South side of Spring St from Wayne St to Liberty St	
640	B	South side of Spring St from Liberty St to Mulberry St	cross slope
641	B	South side of Spring St from Mulberry St to Bennett St	cross slope
642	C	South side of Spring St from Bennett St to Scott St	cross slope and level change
643	B	South side of Spring St from Scott St to SR 1	cross slope
644	B	East side of Scott St from Wabash St to Perry St	cross slope
645	B	East side of Scott St from Perry St to Market St	cross slope
646	B	East side of Scott St from Market St to Walnut St	cross slope
647	C	East side of Scott St from Walnut St to Washington St	cross slope and level change
648	B	East side of Scott St from Washington St to Elm St	cross slope
649	B	East side of Scott St from Elm St to Cherry St	cross slope
650	B	East side of Scott St from Cherry St to Poplar St	cross slope
651	B	East side of Scott St from Poplar St to South St	cross slope
652	B	East side of Scott St from South St to Riley St	cross slope
653	C	East side of Scott St from Riley St to Central Ave	cross slope and level change
654	D	East side of Scott St from Central Ave to Wiley Ave	cross slope, level change, little heaving

Sidewalks			
Bluffton	Grade	Location	Description
655	B	East side of Scott St from Wiley Ave to Ohio St	cross slope
656	D	East side of Scott St from Ohio St to Arnold St	cross slope, level change, little heaving
657	D	East side of Scott St from Arnold St to Silver St	cross slope, level change, little heaving
658	F	East side of Scott St from Silver St to Townley St	everything
659	D	East side of Scott St from Townley St to Horton St	cross slope, level change, little heaving
660	NONE	East side of Scott St from Horton St to Spring St	
661	B	West side of Scott St from Spring St to Horton St	cross slope
662	C	West side of Scott St from Horton St to Townley St	cross slope and level change
663	D	West side of Scott St from Townley St to Silver St	cross slope, level change, little heaving
664	D	West side of Scott St from Silver St to Arnold St	cross slope, level change, little heaving
665	C	West side of Scott St from Arnold St to Ohio St	cross slope and level change
666	B	West side of Scott St from Ohio St to Wiley Ave	cross slope
667	C	West side of Scott St from Wiley Ave to Central Ave	cross slope and level change
668	D	West side of Scott St from Central Ave to Riley St	cross slope, level change, little heaving
669	B	West side of Scott St from Riley St to South St	cross slope
670	B	West side of Scott St from South St to Poplar St	cross slope
671	B	West side of Scott St from Poplar St to Cherry St	cross slope
672	B	West side of Scott St from Cherry St to Elm St	cross slope
673	NONE	West side of Scott St from Elm St to Washington St	
674	C	West side of Scott St from Washington St to Walnut St	cross slope and level change
675	B	West side of Scott St from Walnut St to Market St	cross slope
676	B	West side of Scott St from Market St to Perry St	cross slope
677	B	West side of Scott St from Perry St to Wabash St	cross slope
678	B	East side of Bennett St from Perry St to Market St	cross slope
679	C	East side of Bennett St from Market St to Walnut St	cross slope and level change
680	B	East side of Bennett St from Walnut St to Washington St	cross slope
681	A	East side of Bennett St from Washington St to Elm St	
682	C	East side of Bennett St from Elm St to Cherry St	cross slope and level change
683	B	East side of Bennett St from Cherry St to Poplar St	cross slope
684	B	East side of Bennett St from Poplar St to South St	cross slope
685	B	East side of Bennett St from South St to Riley St	cross slope
686	C	East side of Bennett St from Riley St to Central Ave	cross slope and level change
687	B	East side of Bennett St from Central Ave to Wiley Ave	cross slope
688	C	East side of Bennett St from Wiley Ave to Ohio St	cross slope and level change
689	B	East side of Bennett St from Ohio St to Arnold St	cross slope
690	C	East side of Bennett St from Arnold St to Silver St	cross slope and level change
691	C	East side of Bennett St from Silver St to Townley St	cross slope and level change
692	B	East side of Bennett St from Townley St to Horton St	cross slope
693	D	East side of Bennett St from Horton St to Spring St	cross slope, level change, little heaving
694	D	West side of Bennett St from Spring St to Horton St	cross slope, level change, little heaving
695	C	West side of Bennett St from Horton St to Townley St	cross slope and level change
696	B	West side of Bennett St from Townley St to Silver St	cross slope
697	C	West side of Bennett St from Silver St to Arnold St	cross slope and level change
698	C	West side of Bennett St from Arnold St to Ohio St	cross slope and level change
699	B	West side of Bennett St from Ohio St to Wiley Ave	cross slope
700	C	West side of Bennett St from Wiley Ave to Central Ave	cross slope and level change
701	A	West side of Bennett St from Central Ave to Riley St	
702	A	West side of Bennett St from Riley St to South St	
703	C	West side of Bennett St from South St to Poplar St	cross slope and level change

Sidewalks			
Bluffton	Grade	Location	Description
704	C	West side of Bennett St from Poplar St to Cherry St	cross slope and level change
705	B	West side of Bennett St from Cherry St to Elm St	cross slope
706	B	West side of Bennett St from Elm St to Washington St	cross slope
707	B	West side of Bennett St from Washington St to Walnut St	cross slope
708	B	West side of Bennett St from Walnut St to Market St	cross slope
709	D	West side of Bennett St from Market St to Perry St	cross slope, level change, little heaving
710	B	East side of Mulberry St from Market St to Walnut St	cross slope
711	B	East side of Mulberry St from Walnut St to Washington St	cross slope
712	B	East side of Mulberry St from Washington St to Elm St	cross slope
713	C	East side of Mulberry St from Elm St to Cherry St	cross slope and level change
714	B	East side of Mulberry St from Cherry St to Poplar St	cross slope
715	C	East side of Mulberry St from Poplar St to South St	cross slope and level change
716	C	East side of Mulberry St from South St to Riley St	cross slope and level change
717	D	East side of Mulberry St from Riley St to Central Ave	cross slope, level change, little heaving
718	B	East side of Mulberry St from Central Ave to Wiley Ave	cross slope
719	C	East side of Mulberry St from Wiley Ave to Ohio St	cross slope and level change
720	C	East side of Mulberry St from Ohio St to Arnold St	cross slope and level change
721	C	East side of Mulberry St from Arnold St to Silver St	cross slope and level change
722	C	East side of Mulberry St from Silver St to Townley St	cross slope and level change
723	C	East side of Mulberry St from Townley St to Horton St	cross slope and level change
724	D	East side of Mulberry St from Horton St to Spring St	cross slope, level change, little heaving
725	D	West side of Mulberry St from Spring St to Horton St	cross slope, level change, little heaving
726	B	West side of Mulberry St from Horton St to Townley St	cross slope
727	C	West side of Mulberry St from Townley St to Silver St	cross slope and level change
728	B	West side of Mulberry St from Silver St to Arnold St	cross slope
729	A	West side of Mulberry St from Arnold St to Ohio St	
730	C	West side of Mulberry St from Ohio St to Wiley Ave	cross slope and level change
731	C	West side of Mulberry St from Wiley Ave to Central Ave	cross slope and level change
732	A	West side of Mulberry St from Central Ave to Riley St	
733	C	West side of Mulberry St from Riley St to South St	cross slope and level change
734	F	West side of Mulberry St from South St to Poplar St	everything
735	B	West side of Mulberry St from Poplar St to Cherry St	cross slope
736	C	West side of Mulberry St from Cherry St to Elm St	cross slope and level change
737	A	West side of Mulberry St from Elm St to Washington St	
738	F	West side of Mulberry St from Washington St to Walnut St	everything
739	B	West side of Mulberry St from Walnut St to Market St	cross slope
740	B	East side of Liberty St from Washington St to Elm St	cross slope
741	B	East side of Liberty St from Elm St to Cherry St	cross slope
742	C	East side of Liberty St from Cherry St to Poplar St	cross slope and level change
743	C	East side of Liberty St from Poplar St to South St	cross slope and level change
744	B	East side of Liberty St from South St to Riley St	cross slope
745	B	East side of Liberty St from Riley St to Central Ave	cross slope
746	C	East side of Liberty St from Central Ave to Wiley Ave	cross slope and level change
747	NONE	East side of Liberty St from Wiley Ave to Ohio St	
748	NONE	East side of Liberty St from Ohio St to Arnold St	
749	NONE	West side of Liberty St from Arnold St to Ohio St	

Sidewalks			
Bluffton	Grade	Location	Description
750	NONE	West side of Liberty St from Ohio St to Wiley Ave	
751	C	West side of Liberty St from Wiley Ave to Central Ave	cross slope and level change
752	C	West side of Liberty St from Central Ave to Riley St	cross slope and level change
753	B	West side of Liberty St from Riley St to South St	cross slope
754	B	West side of Liberty St from South St to Poplar St	cross slope
755	C	West side of Liberty St from Poplar St to Cherry St	cross slope and level change
756	B	West side of Liberty St from Cherry St to Elm St	cross slope
757	B	West side of Liberty St from Elm St to Washington St	cross slope
758	B	East side of Wayne St from Spring St to Harrison Plaza	cross slope
759	C	West side of Stogdill Rd from School Dr to Hollyhock Ln	cross slope and level change
760	C	West side of Stogdill Rd from Hollyhock Ln to Honeysuckle Ln	cross slope and level change
761	C	West side of Stogdill Rd from Honeysuckle Ln to Spring St	cross slope and level change
762	B	West side of Stogdill Rd from Spring St to Echo Ln	cross slope
763	B	West side of Stogdill Rd from Echo Ln to Summit Ave	cross slope
764	B	West side of Stogdill Rd from Summit Ave to Sycamore Ln	cross slope
765	B	West side of Stogdill Rd from Sycamore Ln to River Rd	cross slope
766	B	South side of Dustman Rd from End of Sidewalk to Sunset Dr	cross slope
767	B	West side of Sunset Dr from Dustman Rd to Garden Ln	cross slope
768	D	West side of Sunset Dr from Garden Ln to Lakeside Ct	cross slope, level change, little heaving
769	D	West side of Sunset Dr from Lakeside Ct to End of Sidewalk	width, cross slope, level change
770	D	East side of Sunset Dr from End of Sidewalk to Lakeside Ct	width, cross slope, level change
771	D	East side of Sunset Dr from Lakeside Ct to Garden Ln	cross slope, level change, little heaving
772	C	East side of Sunset Dr from Garden Ln to Dustman Rd	cross slope and level change
773	B	South side of Dustman Rd from Sunset Dr to Sunrise Way	cross slope
774	D	West side of Sunrise Way from Dustman Rd to Garden Ln	width, cross slope, level change
775	D	West side of Sunrise Way from Garden Ln to End of Sidewalk	width, cross slope, level change
776	D	East side of Sunrise way from End of Sidewalk to Garden Ln	width, cross slope, level change
777	D	East side of Sunrise way from Garden Ln to Dustman Rd	width, cross slope, level change
778	C	South side of Dustman Rd from Sunrise Way to End of Sidewalk	cross slope and level change
779	C	North side of Virginia Ct	cross slope and level change
780	C	South side of Virginia Ct	cross slope and level change
781	C	East side of Columbian Ave from Lancaster St to Sunny Glen Ct	cross slope and level change

Sidewalks			
Bluffton	Grade	Location	Description
782	C	North side of Sunny Glen Ct from Columbian Ave to End	cross slope and level change
783	C	South side of Sunny Glen Ct from End to Columbian Ave	cross slope and level change
784	C	East side of Columbian Ave from Sunny Glen Ct to Woodlawn	cross slope and level change
785	C	East side of Columbian Ave from Woodlawn to Washington St	cross slope and level change
786	C	West side of Columbian Ave from Washington St to Woodlawn	cross slope and level change
787	C	West side of Columbian Ave from Woodlawn to Sunny Glen Ct	cross slope and level change
788	C	West side of Columbian Ave from Sunny Glen Ct to Lancaster St	cross slope and level change
789	B	East side of Westgate Rd from Hi-Lo Dr to Lancaster St	cross slope
790	C	East side of Westgate Rd from Woodlawn to Hi-Lo Dr	cross slope and level change
791	C	East side of Westgate Rd from Washington St to Woodlawn	cross slope and little heaving
792	D	West side of Westgate Rd from Woodlawn to Washington St	width, cross slope, level change
793	D	West side of Westgate Rd from Hi-Lo Dr to Woodlawn	cross slope, level change, little heaving
794	C	West side of Westgate Rd from Lancaster St to Hi-Lo Dr	width and cross slope
795	B	South side of Hi-Lo Dr from Westgate Rd to corner	cross slope
796	B	West side of Hi-Lo Dr from corner to Woodlawn	level change
797	C	East side of Hi-Lo Dr from Woodlawn to corner	level change and little heaving
798	B	North side of Hi-Lo Dr from corner to Westgate Rd	cross slope
799	C	North side of Woodlawn from Hi-Lo Dr to Westgate Rd	width and cross slope
800	B	North side of Woodlawn from Columbian Ave to Hi-Lo Dr	level change
801	D	South side of Woodlawn from Hi-Lo Dr to Columbian Ave	cross slope, level change, little heaving
802	D	South side of Woodlawn from Westgate Rd to Hi-Lo Dr	cross slope, level change, little heaving
808	B	Farmington Dr	width and cross slope
809	B	Greenfield Ln	width and cross slope
810	B	Granary Ct	width and cross slope
811	B	Wheatfield Ct	width and cross slope

Sidewalks			
Bluffton	Grade	Location	Description
820	B	North side of Garden Ln from Sunrise Way to Sunset Dr	cross slope
821	B	South side of Garden Ln from Sunset Dr to Sunrise Way	cross slope
822	D	West side of Bond St from Jefferson St to Wiley Ave	cross slope, level change, little heaving
823	D	North side of Walnut St from SR 1 to Johnson St	width, cross slope, level change
824	D	North side of Walnut St from Johnson St to Marion St	width, cross slope, level change
825	C	North side of Walnut St from Marion St to End of Sidewal	width and cross slope
826	D	South side of Walnut St from Marion St to Johnson St	width, cross slope, level change
827	A	South side of Walnut St from Johnson St to SR 1	
828	D	North side of Washington from Beth Ave to Midway St	width, cross slope, level change
829	B	North side of Cherry St from Beth Ave to Midway St	cross slope
830	C	South side of Cherry St from Midway St to Beth Ave	cross slope and level change
831	C	North side of South St from Beth Ave to Midway St	cross slope and level change
832	F	South side of South St from Beth Ave to Midway St	heaving and grass covered
833	D	North side of Central Ave from Beth Ave to Midway St	width, cross slope, level change
834	D	South side of Central Ave from Midway St to Beth Ave	width, cross slope, level change
835	A	North / South side of Red Oak Ct from Forrest Dr to Fieldcrest	
836	A	East/West side Oak Forrest Dr from Stillwater to Red Oak Ct	
837	A	West side of Fieldcrest from Topaz to Goldenrod	
838	A	North / South side of Topaz from Oak Forrest Dr to Dogwood	
839	A	North / South side of Topaz from Dogwood to Songbird Ln	
840	A	North / South side of Topaz from Songbird Ln to Stillwater	
841	A	North / South side of Topaz from Stillwater to East End of road	
842	A	East / West side of Stillwater from Topaz to 100 feet North	
843	A	East / West side of Dogwood from Topaz to Topaz	
844	A	East side of Songbird from Topaz to 100 feet South	
845	A	South side of East Monroe at Kensington Dr	

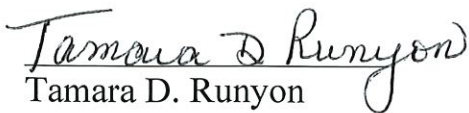
Updated by the Board of Public Works and Safety this 18th day of April, 2023.


Mayor John Whicker


Scott Mentzer

Josh Hunt

Attest:


Tamara D. Runyon
Clerk-Treasurer